
SAMHSA Project LAUNCH



*New Mexico Department of Health
Public Health Division
Family Health Bureau*

New Mexico State Environmental Scan



May 29, 2009

Project LAUNCH
New Mexico State Environmental Scan

Table of Contents

Introduction—New Mexico	3
Participant Description	4
Methodology	4
Reflections on Successes and Challenges	6
Early Care and Education	8
Health: Primary Care and Other	12
Mental Health and Social Emotional Wellness	17
Family Engagement: Family Support and Parent Education	19
Out-of-School Time/Enrichment	21
New Mexico: Systems Development	22
Appendix A	28
Appendix B	53
Appendix C	54

Introduction

New Mexico is a diverse state in terms of geography and population. About 40% of the population resides in the greater Albuquerque area – the state’s major urban center. The state has a rich history of innovative programs to serve the needs of New Mexicans of all ages and from diverse heritages in both rural and metropolitan areas. However, the challenges it faces, especially for children birth through age eight, are large. New Mexico is a minority-majority state with 139,300 children ages birth to five; 70% of children ages zero to four are minorities.¹ (See Figure 1.) In 2005, an estimated 26% of NM children under 18 were living in families at or below 100% of the Federal Poverty Level (FPL) as contrasted with 18.5% in the US. The state estimate ranged from 47.4% in Luna County to 3.0% in Los Alamos County². The percentage of households with low and very low food security is also well above the national average. From 2004-2006, 16.1% of New Mexico households reported having some food insecurity, 10.3% had low, and 5.8% had very low food security, which includes going without food. In addition, from 2005-2007, New Mexico ranked 3rd highest in the nation for the percentage of low-income, uninsured children. (Low-income are children living at or below 200% of the federal poverty level.) The state percentage of 11.7% was above the national average of 7.1%.³ Without basic needs being met, it is hard for children to thrive during the critical first years of brain development.

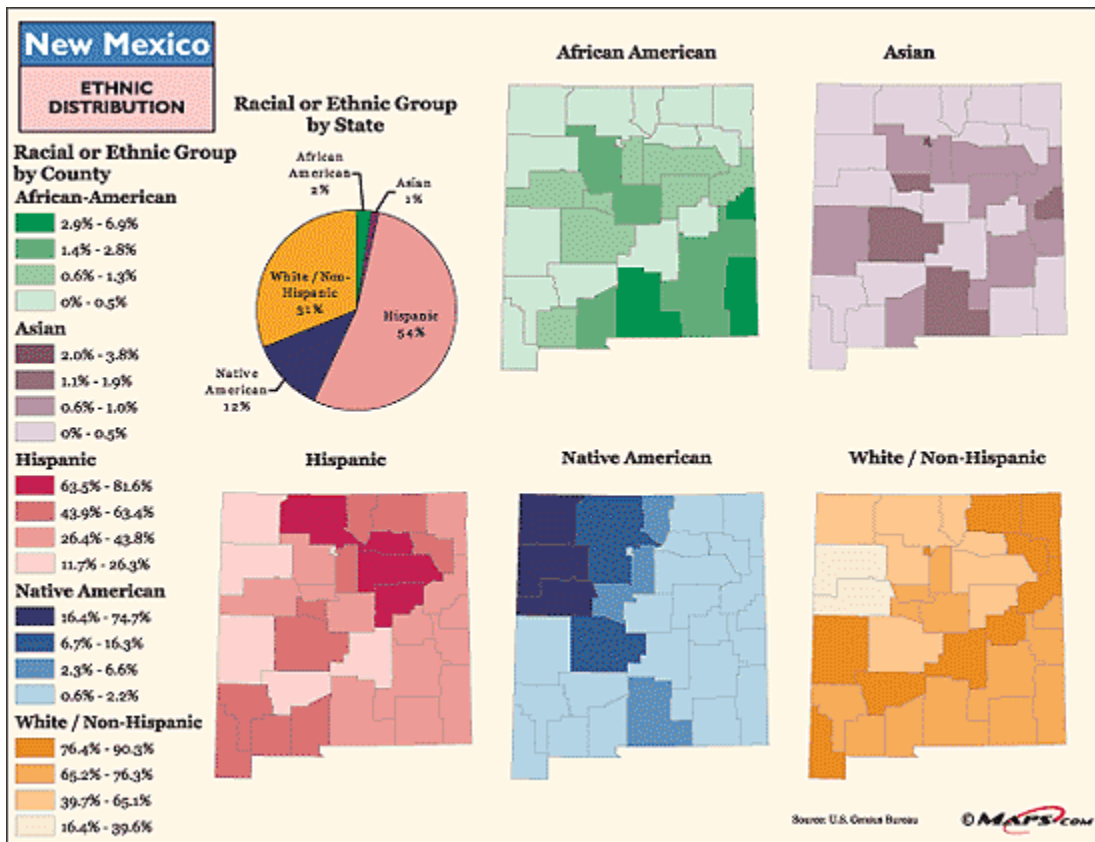


Figure 1: Ethnic Distribution

Participant Description

The New Mexico Children's Cabinet was established in February 2003 by Governor Bill Richardson in recognition of the important role young children play in the future of New Mexico. The Governor understood that the well-being of our state rests on the well-being of our children and recognized the need to strengthen existing networks and build new ones between agencies. The Children's Cabinet intent is to provide a forum for this inter-agency communication and collaboration to occur. The Lieutenant Governor, Diane Denish, chairs the Cabinet and her office oversees all of its activities.

The Cabinet collects data and produces a Report Card and Budget annually that tracks 22 indicators within the five goal areas: healthy, educated, safe, supported and involved. The budget report documents spending on services related to the five goal areas provided by the state departments serving children from birth to age 21⁴. The Children's Cabinet granted access to the budget and spending data for the purpose of the state level environmental scan. This database has information on services provided, reach and funding of each state agency that serves children birth to 21. Because of the Project LAUNCH target population, programs directly affecting children from birth to age eight and their families have been included in this scan. The information collected from this database can be found in the tables (Appendix A).

The Multi-Agency Team: Council for Young Child Wellness (MAT CYCW) provided additional insight to services provided to children through the state agencies. In addition, the Early Childhood Comprehensive Systems (ECCS) Grant Coordinator was interviewed extensively to expand on data given by the MAT CYCW. Finally, key stakeholder interviews with staff from the Department of Health (DOH) and the Children, Youth and Families Department (CYFD), as well as private sector and university based programs were conducted to understand the key programs, current priorities, collaborative work, barriers and gaps in service in the state.

Methodology Description

The focus of the environmental scan was on services and programs serving the population from birth to age eight; emphasis was placed on agencies and programs in public as well as the private sector whose work relates to the objectives and performance measures of Project LAUNCH.

Methods used in this scan included:

- Identification of key informants
- Interviews with key informants
- Document Review

The Multi-Agency Team: Council on Young Child Wellness (MAT CYCW) convened for the first time in early December 2008. At this time, information was distributed to the members about the environmental scan and the information to be collected. The coordinator of the Children's Cabinet attended the meeting and offered to share their database which contained much of the information needed for the state level scan. Data collection continued at subsequent MAT CYCW meetings, as members shared information on contacts and programs that were working statewide with children from birth to eight. The ECCS Coordinator, who is a member of

the MAT CYCW, provided additional information from ECAN's work. From this list, interviews were conducted to capture the essence of what is being done statewide for children birth to eight in both the public and private sectors.

Upon receiving the Children's Cabinet's Budget Database which included programs funded by the state, intense study began of the information included. All programs that directly affect children birth to eight or their families were extracted. Only current year data are included.

Informants interviewed from both state and private agencies had programs with a statewide reach, with the exception of one informant at the City of Albuquerque – where 40% of the state's population resides. After many interviews, it became apparent that many communities throughout New Mexico are working on the same initiatives as Project LAUNCH: home visiting, providing quality preschool, community school development and parent engagement but often as separate components. Project LAUNCH provides a new opportunity to integrate these components into a system of child wellness.

The information collected has been categorized into the following six categories:

1. Early Care and Education
2. Health (Primary and Other)
3. Mental Health and Social and Emotional Health
4. Parent Engagement
5. Out of School Time
6. Systems Development

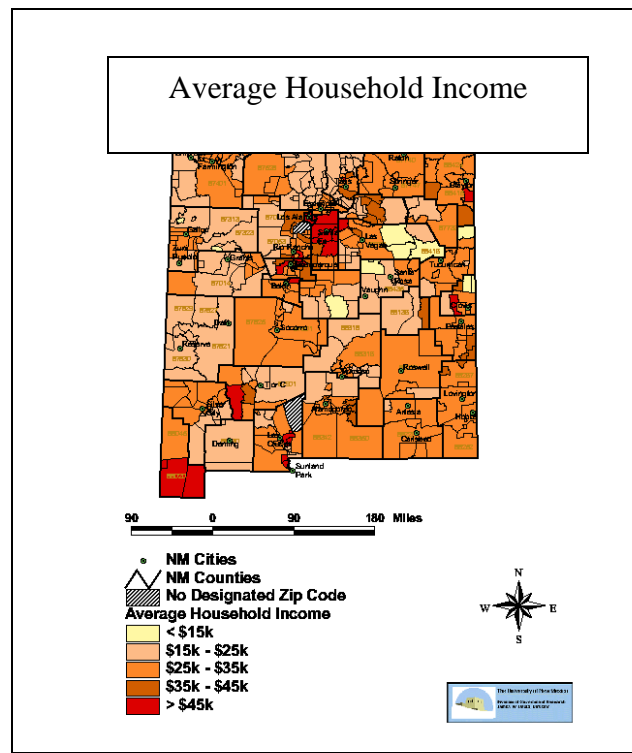
Reflections on Successes and Challenges

For each category, strengths are addressed by describing current programs and initiatives in the state. In a state with limited resources, collaboration and thinking outside of the box are common place. New Mexico has numerous and varied agencies working to improve the lives of children and families, engage and strengthen communities and build services and collaboration. Multiple groups work together across the state; strong communication and willingness to work collaboratively were named as key strengths by stakeholders. This innovation has been recognized by the Kellogg Foundation which has named New Mexico one of three priority states in regards to funding early childhood programs.⁵ However, the following challenges exist statewide.

Poverty

The issue of poverty repeatedly came up during interviews. The 2008 report from New Mexico Voices for Children states that about one in four New Mexican children live in poverty.⁶ (See Figure 2.) While the unemployment rate in New Mexico (5.4%) remains below the national average of 8.9%, many jobs are low paying, seasonal and/or offer no benefits. The issue of unemployment/underemployment is compounded in rural areas. The absence of a sufficient number of viable jobs in the state increases food insecurity, decreases access to medical services and hinders educational achievement – outcomes that negatively impact child and family wellness. The current economic downturn has only exacerbated the situation. From February 2008 until February 2009 food stamp applications have risen over 20%, unemployment payments have increased 125.6%, Temporary Assistance for Needy Families (TANF) has had a 16.8% caseload increase, and enrollment in Medicaid programs has increased 11.6%.⁷

Figure 2.



SOURCE : http://www.unm.edu/~dgrint/hpc_web/avhinc.gif

Education and Workforce Development

In 2007, 82% of New Mexican adults over 25 had either graduated from high school or earned their GED; 25% had a Bachelor's degree or higher. The percentage drops drastically when looking at families living at or below the Federal Poverty Level. For this segment of the population, 45% have not graduated from high school, 33% have a high school diploma or GED and 11% have a college degree or higher.⁸ State agencies are faced with having to build work force capacity at the same time they build the infrastructure to train the employees. Sufficiently qualified workforce does not exist – especially in the area of early care and education. Providers are forced to hire unqualified workers who they then have to train, requiring both time and money from the worker and the state.

Transportation

Transportation is an additional barrier for New Mexican families. New Mexico has the 5th largest land area of all states with an average of 15 persons per square mile. Without reliable transportation and money for gas, families cannot seek services for their children. This is especially difficult for those living in rural areas where public transportation is non-existent or limited and distances traveled are substantial.

Service Coordination and Collaboration

Agencies spoke about the great services and programs implemented across the state to better the lives of New Mexican children from birth to eight. However, many noted that the services were not aligned and there lacked a continuum. Programs operated in silos with little communication with other providers, resulting in duplication of services and omission of others. One informant said the early childhood services in New Mexico operated in “cacophony that needs to be turned into a symphony.” Steps are being made to re-define how different work together. (See the Systems section—Interagency Coordination for more information on the recent re-alignment.)

Early Care and Education

New Mexico's current administration is committed to and well informed about early childhood development, care and education. Since FY05 NM state funding for early childhood education increased over 50% from \$115.2 million in FY05 to \$166.5 million in FY08.⁹ The New Mexico Pre Kindergarten (NM PreK) program began in the 2005 – 2006 school year with a budget of \$2.5 million and has increased to \$18.5 million for FY08. In addition, full-day Kindergarten has been offered throughout the state since the fall of 2005. The funding for early childhood education increased with the understanding that 90% of brain development occurs from birth to five years of age.

Early Learning Opportunities

Head Start and Early Head Start are operated by fourteen different community contractors throughout the state. Additionally, there are 20 American Indian-Alaska Native Head Start and Early Head Start programs in the 22 sovereign tribal communities. They play an important role in offering preschool to three through five years olds of income qualifying families. Early Head Start sites provide much needed quality child care for children birth through three years old. Head Start and Early Head Start have many partners throughout the state that offer developmental screenings, nutrition, parenting education and, more recently father involvement programs. State agencies and private organizations collaborate to provide these services. Organizations such as Parents Reaching Out (PRO) and the University of New Mexico Family Development Center (UNM FDC) deliver services to the Head Start and Early Head Start communities to strengthen families.

The Children, Youth and Families Department (CYFD) and the Public Education Department (PED) jointly oversee NM PreK programs. The New Mexico PreK program was developed as a joint project between PED and CYFD with input from early childhood experts around the state. PED oversees the programs that are run by the school districts while the private programs are managed by CYFD. For the 2006-2007 school year, NM PreK had 78 sites in eighteen of the 33 counties in NM. For the current year, the number has increased to 150 sites in 22 counties. Justification for funding increases were supported by New Mexico's participation in a National Institute of Early Education Research (NIEER) study of the NM PreK program that documented the positive impact the program has had on four year olds in NM. The study showed that children enrolled in NM PreK programs scored higher in vocabulary, math and print awareness than those who did not.¹⁰

In addition to the PreK programs, CYFD also manages thirteen early childhood development centers throughout the state that offer high quality early education for children birth through five. The programs use the Focused Portfolio system for assessment of student progress.¹¹

Early Child Care Capacity Building and Quality Improvement

CYFD also implements the STAR rating system for childcare providers. In the last four years, the number of licensed and STAR-quality accredited child care providers has increased from 14.7% to 67.5%. Of the 1,005 licensed early childcare providers in 2008, 12.5% had national accreditation (5 star rating); 55% had 2-4 STAR rating and 32.5% had a 1 STAR rating.¹² The chart below describes the different criteria of the STAR ratings.¹³

1 STAR	2 STAR	3 STAR	4 STAR	5 STAR
Basic documentation and health and safety items required to obtain a license	Focuses on a functional environment positive interactions between caregivers and children, and three handbook elements	Developmentally appropriate curriculum & lesson planning, Assessment of children's progress, rotation of materials, completion of an Environment Rating Scale	Results of children's assessment used to create curriculum and lesson planning, lower adult to child ratios and group sizes	National Accreditation

CYFD also offers tuition reimbursement for childcare for income qualifying families. The child care reimbursement rate increases with each STAR level, creating an incentive for providers to increase their STAR rating. In addition, publically-funded sites are contractually required to move to a higher STAR level each year in order to retain their funding. In order to support providers in achieving a higher STAR rating, the AIM HIGH program was developed. The goal of this program is to support child care programs to improve the quality of their services to children and families by providing technical assistance through Program Development Specialist who mentor and offer on-site support as well as funds for equipment and training.¹⁴

Additionally, CYFD designs the curriculum for New Mexico's Early Care, Education and Family Support Professional Development System for licensure and/or a degree (AA, BA, MA) in early childhood education. This program was developed to offer professional development to the early childcare providers throughout the state who work in both home and center settings. The curriculum is offered at different institutions throughout the state. In 2004, the Teacher Education and Compensation Helps (T.E.A.C.H.®) scholarship program was created to provide access to higher education for early childhood education providers. At its inception, 21 scholarships were awarded compared to 404 in 2008.¹⁵ The New Mexico Association for the Education of Young Children (NMAEYC) provides scholarships for those working in homes and centers while the NM T.E.A.C.H.® supports teachers working in the public schools. At present, both agencies have more requests than scholarships available. The T.E.A.C.H.® program was developed to build a strong and knowledgeable workforce in the NM early childhood setting by offering financial assistance to higher education.

Finally, CYFD funds the Training and Technical Assistance Programs (TTAPs) which offer continuing education for child care providers, teachers and parents throughout the state. These classes are not for college credit but can help a center achieve a higher STAR rating. CYFD contracts with six different groups throughout the state to provide the classes and training. While the TTAPs have operated in New Mexico for 30 years, it has only been statewide for the last four years.

The PED funds the following programs: the educator licensing bureau, assessment and curriculum development, Title I programs, Special Education, Bilingual services, school improvement initiatives, and professional development opportunities for educators at all levels. According to the 2009 Children's Cabinet Budget report, PED funded 84.9% of the educational outcomes for FY07.¹⁶

Transitions

In 2004, the New Mexico Community Foundation (NMCF) in conjunction with the Kellogg Foundation and other funders began the Supporting Partnerships to Assure Ready Kids (SPARK) initiative that works with families, children and schools to ensure a strong transition into school for children ages three through six. SPARK is based on four key principles:

1. Strong partnerships among families, providers, community organizations and ready schools ensure that all children can learn and succeed in school.
2. Quality is a critical element of a child's early learning, from birth through the early years of school.
3. Parents and families at home and working with early-care providers are critical to ensuring that children succeed in school.
4. School leaders and teachers, working with the community's support, can create smooth transitions from early-learning settings so that children can succeed in school.¹⁷

Six diverse communities in New Mexico (Shiprock, Espanola, Laguna, Albuquerque, Hobbs, Chaparral) were involved in the NM SPARK initiative. They collaborated with Joining Hands, Project FLECHA (Family Leadership for Education, Culture and Healthcare Access) and the NM Teacher Education and Compensation Helps (NM T.E.A.C.H.®) scholarship program to ensure all children had high quality and aligned early educational opportunities. Joining Hands provided the framework for the community, preschools and elementary schools to collaborate and align the early care to early learning and create ready kids and ready schools. The FLECHA program was used to engage parents in their child's development and bridge a strong partnership between school and home which ultimately results in higher achievement. The NM Community Foundation found that kindergarten readiness scores were higher for those children who were involved with the SPARK program.¹⁸

Challenges

- **Transitions**

There is little alignment between preschools and the public schools as both hold different expectations. The NM Supporting Partnerships to Assure Ready Kids (NM SPARK) program worked with six communities to coordinate with schools, families and children to ensure a smooth transition into preschool, kindergarten and elementary school and ultimately school success. The target population for these programs was children living in poverty with the goal of ensuring school success. While the program has had strong results, more programs like this are needed throughout the state to raise New Mexico from 46th in the nation for the well-being of children.¹⁹

- **Workforce Development**

Throughout the state high quality childcare – especially for infants and toddlers is hard to find. For example, Santa Fe County has approximately 1,600 births per year with only 80 licensed/registered slots at day care centers for infants. Within the state, there are 480 licensed and 5,000 – 6,000 registered home day care providers. Sites that are registered are reimbursed for their food costs but little additional monitoring occurs. The number of

underground child care providers (not licensed or registered) is unknown but thought to be a large number, which means many New Mexican children are being cared for by providers who have no training in child development.²⁰

Workforce retention is another issue that exists in New Mexico. In the case of early childhood educators, the public school system's pay rate is much higher than that of a childcare center. Once licensed, qualified teachers often leave the childcare center and seek employment at the public school. The Head Start Reauthorization requires a certain percentage of teachers be bilingual and degreed upon hiring – a workforce that is hard to come by in some areas of the state. In the past, teachers had two years to obtain their degrees.

- **Public Awareness**

A clear understanding of child development as a field and a profession does not exist at this time in the state. The current administration is attempting to educate lawmakers and the general public, but much more needs to be done. Parents, childcare providers and teachers must be well informed on the importance of the first five years of a child's life so they can support optimal development. In addition, higher education teachers must also have a complete understanding of the latest information on child development.

Health: Primary Care and Other

For the purpose of this scan, health has been broken down into Primary Care and Other. Primary Care refers to basic medical services provided by local clinics and medical centers while the Other category includes preventative services such as nutrition, obesity reduction, substance abuse and tobacco use prevention.

Insurance Coverage

The State is acutely aware of the lack of insurance coverage for low-income children and is trying to remedy this situation. In 2006, Medicaid began a campaign to increase enrollment of children in the New MexiKids program and by 2008 the percentage of uninsured children had dropped by almost one percent. The New MexiKids program is funded by the Human Service Department (HSD) and includes the state Medicaid program. Eligible children are those whose families live at or below 185% of the Federal Poverty Level (FPL). The State Child Health Insurance Program (S-CHIP) covers children whose families live between 185-235% of FPL. Enrollment in New MexiKids increased from 336,600 children in 2008 to an estimated 361,200 in 2009.²¹

In addition to New MexiKids, HSD funds a Premium Assistance for Kids or PAK program that helps uninsured children over 235% of FPL. PAK services have a co-pay on a sliding scale or higher (no cost) and operates under S-CHIP. In addition, Children's Medical Services (CMS) in the DOH provides case management, specialty clinics and procures health care coverage for children and youth with special health care needs who are otherwise not eligible for New MexiKids or PAK.

Rural/ Primary Health Care

Assuring quality medical services in both the rural and urban areas poses a huge challenge for the state as the needs for each area differ. Twenty seven of the 33 counties in New Mexico are considered frontier counties which means less than seven people reside per square mile. Also taken into consideration is distance to services/population centers as well as travel time, availability of paved roads and seasonal changes in access to services.²² (See Figure 3.)

A study conducted in 2007 by the Health Care for All campaign found that in the rural areas essential services such as prenatal care are not provided, the hours of a health care center are too limited, and transportation and child care resources are scarce. Lack of health insurance, or being underinsured, and pre-existing conditions are additional factors that inhibit access to health care for many who live in the rural areas of the state.²³ Similar circumstances are found in the urban areas as well. In fact, in 2008, eight of the 33 counties did not have birthing centers and providers to attend births.²⁴

There are 15 Federally Qualified Health Centers (FQHC) throughout the state. In 1999, New Mexico passed the Rural/Primary Care Health Care Act. The program is operated by the Department of Health and provides clinics with operating cost support, recruitment and hiring of health care professionals and also coordinates equipment and funding sources. In 2008, the rural

health care centers had approximately 900,000 visits of which 25% - 35% were paid for through Medicaid, 25% Medicare and more than 30% by a sliding fee scale.²⁵

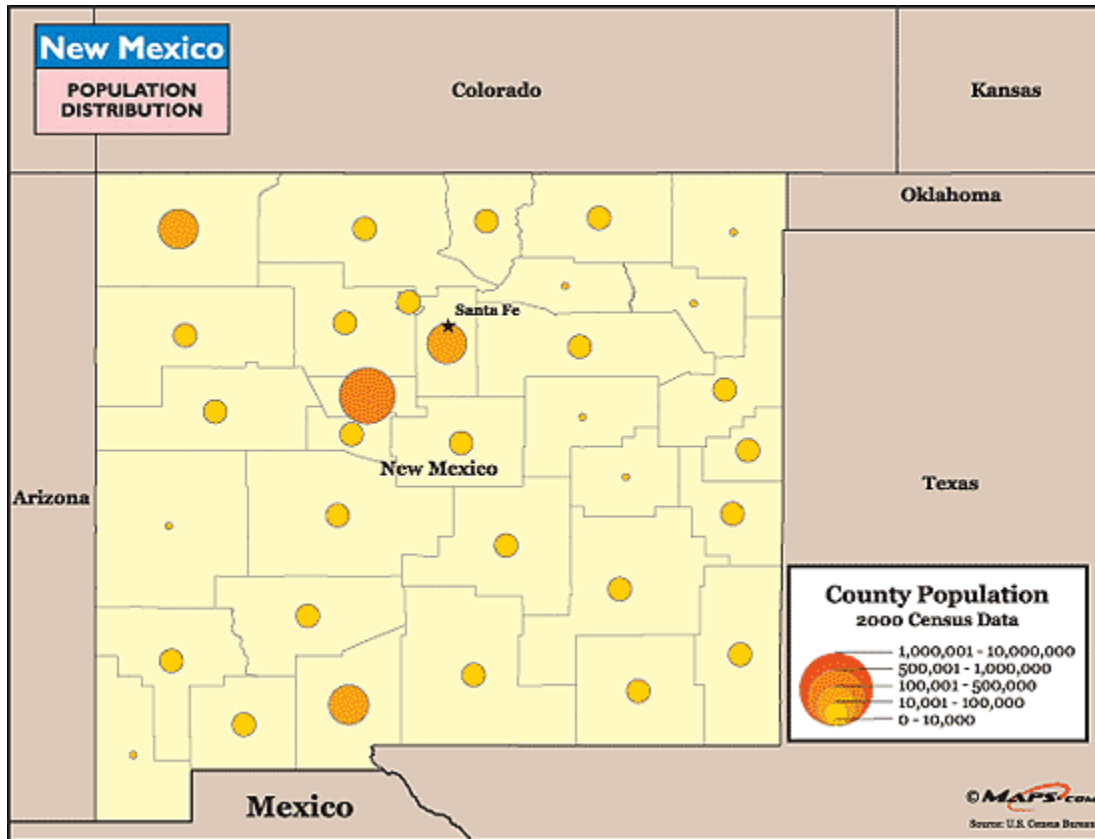


Figure 3: Population Distribution

Indian Health Services

The Indian Health Services (IHS) operates eight Service Units throughout the state that serve the 19 Pueblos, the Jicarilla and Mescalero Apaches and the Alamo, Canoncito and Ramah Chapters of the Navajo Nation. (See map of Reservations and Pueblos in the Santa Fe County Narrative.) Throughout the state, HIS operates five hospitals, eleven health centers, and twelve field clinics. The Service Units provide dental services, health education, occupational therapy, contract care, environmental health and sanitation services with special clinics that prioritize women's health, diabetes, children and wellness. The administrative office for the Service Units is located in Albuquerque.²⁶

The Service Units work in close collaboration with the tribal communities to identify and address the health problems in both traditional and modern medical ways. For example, at the Acoma-Canoncito-Laguna service unit located 70 miles west of Albuquerque, when constructing the hospital, tribal members requested a room be built for traditional healing that was shaped like an octagon with the main door facing east and with a fire pit in the center of the room. Instead of only relying on modern medical practices that treat symptoms, traditional methods focusing on prevention and the whole person are incorporated.

In addition, tribes strive to have community members as service providers. For instance, the Pine Hill Health center has a goal for total community staffing. Every effort is made to attract local youth to the health care profession and provide high quality training for those that do choose the profession.²⁷

Prenatal Care

The DOH, Family Health Bureau (FHB) manages the midwifery licensing and regulations in the state – a significant job since 30% of births in the state are attended by Certified Nurse Midwives (CNM) or Licensed Midwives (LMW). At present, there are 160 CNM and 50 LMW practicing in New Mexico. Training centers are located in Taos for LMW and Albuquerque for CNM.²⁸

FHB is working hard to assure that every mother has access to adequate prenatal care as New Mexico has one of the lowest rates in the nation with 61.1% receiving services.²⁹ In order to provide care to more women, attempts to reframe prenatal care are underway. Instead of seeing patients individually, groups of women would be seen. During the visit, the provider would have a short visit with each woman while the others were checking their weight, blood pressure, etc. and then the group would convene for a group prenatal class. This model has been studied in Connecticut and Texas with results that showed reduction in preterm births, higher birth weights, higher rates of breastfeeding initiation and continuation and patient and provider satisfaction. It is also used for post-partum well-baby checks.³⁰

Additionally, the FHB produces the Prenatal Protocols used in Regions four and five, the southern half of the state. The handbook outlines clinical protocols for providers in Spanish and English. The 2007 version is currently being updated.

Early Intervention

Research shows that early intervention for children yields more positive outcomes. Early diagnosis and referral to appropriate resources improves the chance of a child with developmental delays having positive learning outcomes. The Family Infant Toddler (FIT) program in the Long Term Care Division of the DOH serves children from birth to age three who have a 25% developmental delay or who have at risk medical issues and/or environments. The last two eligibility requirements are unique to New Mexico making them less stringent than most states. FIT contracts with agencies throughout the state to provide services defined in the child's Individualized Family Service Plan (IFSP). Approximately 94% of services are delivered in the child's home. In 2008, 11,071 children – or one in eight New Mexican kids birth to three were enrolled in the FIT program. While the demand is high, no child is turned away for service. The New Mexico FIT program is collecting data from throughout the state to highlight the positive outcomes the program brings to New Mexican children.³¹

Developmental Screening Initiative (DSI)

In 2006, the Early Childhood Action Network (ECAN) in conjunction with FHB coordinated the Developmental Screening Symposium that formed the foundation for New Mexico's Developmental Screening Initiative (DSI). The Improving Developmental Care for Young Children and Their Families in New Mexico report was published as a result. Over 1,600 copies have been distributed statewide. The DSI has also created a pamphlet in conjunction with Parents Reaching Out (PRO) to record developmental milestones as well as shot protocols for children.

The pamphlet created with doctor and parent input is being distributed to clinics around the state. Families can keep this book to keep track of immunizations and developmental milestones for their children to ensure they stay on track.

DSI is a collaboration between Envision New Mexico: the Initiative for Child Health Care Quality and the Center for Development and Disability within the Pediatric Department at the University of New Mexico. Together with Envision New Mexico, DSI is implementing quality improvement initiatives for pediatricians in New Mexico – the only agency approved by the American Academy of Pediatrics in the state to do this. At present, they are working in five regions of the state but have plans to expand statewide as agency infrastructure and capacity build. The goal is to have all pediatricians incorporate routine standardized screening in their practices, involving all staff members (nurses, receptionists, etc.) to ensure that no child gets to kindergarten with an undetected developmental delay. In addition, community members (i.e. doctors, WIC providers, schools, public health clinics, mental health providers, early interventionists, parents) create a system of care – or medical homes – that are family centered. In this model, families become in charge of their child’s medical care and pediatricians keep in mind all of the needs of the family – not just medical.³²

NM Women, Infant and Children Program (WIC)

NM WIC plays an important role providing much needed services for low-income women and children up to age five who are at nutritional risk. From July 2005 to June 2006, 60% of New Mexican infants were seen at one of 110 WIC clinics across the state. In addition to providing nutritious foods and information on healthy eating, the clinics also offer referrals to health care providers and breastfeeding information and support. Their goal is to have all women breastfeed for one year. In 2006, WIC staff made almost 60,000 referrals to health and social service programs.

Challenges

- **Workforce Retention**

The Primary and Rural Health office of DOH works hard to recruit and retain medical professionals to the state. Salaries must be high enough to compete with private providers. Loan repayment programs are also used as incentives. Despite tremendous efforts, New Mexico will lack 1,500 providers throughout the state by the year 2010. The absence of qualified providers can already be felt in the rural areas as eight counties in New Mexico had no birthing providers and facilities in 2008.³³

- **Lack of Medical Homes**

Agencies stated that many New Mexican children do not have a medical home, which makes preventative well-child visits less regular. Twelve percent of children received all well-child checks in New Mexico. Children with no medical homes seek medical attention for acute conditions only. State agencies are actively trying to link families to medical homes through Medicaid enrollment, home visiting programs and the FIT program. One informant mentioned that the services are not set up in a family friendly way. Often times, families have to take off of work for appointments and travel to several offices for various referrals. Ideally, all providers would have more flexible hours of operation and be co-located to cut down on travel time.

- **Linguistic Barriers**

While many staff at health centers speak Spanish and other native languages, many providers do not.

- **Public Awareness**

Parents need to be well informed on the importance of the first five years of a child's life so they can support optimal development. They need to know when to and where they can seek services for their families if need be.

Mental Health and Social and Emotional Wellness

Home visiting for first time mothers has recently been developed as an important strategy to promote health, social and emotional wellness for New Mexico children prenatally through age five. State funding for home visiting programs increased from \$98,000 in 2008 to \$2.3 million in 2009 as a result of the administration's commitment to improving outcomes for children. Focus is on areas such as healthy births, safe home environments, and support for strong family relationships for children in New Mexico. Scientific research supports the positive effects home visiting has on the development of a child. The DOH Family Health Bureau (FHB) in collaboration with the Children, Youth and Families Department (CYFD), key stakeholders and legislators created the Home Visitation Task Force to develop a statewide plan for voluntary newborn home visitation.

Home Visiting

In 2007, House Bill 168 was passed which established a Home Visiting Work Group (the Work Group) who began to develop plans for a long-term statewide system of delivering universal and voluntary home visiting programs for families during pregnancy through age five. The Work Group advised that investment in home visiting was crucial to ensure all children in New Mexico had access to home visiting to improve outcomes. The Work Group adopted the following goals from the NM Children's Cabinet for the state home visiting programs, making them specific to children from birth to age 5 years:

- All NM children birth to five will be physically and mentally healthy
- All NM children birth to five will be safe
- All NM children birth to five will learn the skills they need to be ready for school
- All NM children birth to five and their families will be supported
- All NM children birth to five and their families will be involved with their communities³⁴

CYFD funds fourteen home visiting programs that work with first time families throughout the state. The programs are required to use a home visiting curriculum of their choosing to ensure consistent services for all participants. Professional development opportunities are available through the New Mexico Association for Infant Mental Health's Endorsement for Culturally Sensitive, Relationship-focused Practice Promoting Infant Mental Health. This program was created to provide the opportunity for home visitors to broaden their knowledge of infant mental health so that it can be passed down to the families with whom they work. It also ensures best practices are being used with families.

Child Protective Services

In addition to the home visiting program, CYFD also oversees the Child Protective Services (CPS) investigations and the related in-take, adoption and foster care programs and domestic violence services. In 2007, there were 16,005 cases of reported abuse or neglect and 4,050 substantiated reports.³⁵ CYFD created the Abuse and Neglect Prevention-Children's Fund to help mitigate costs of protecting children.

The New Mexico Pregnancy Risk Assessment Monitoring System (NM PRAMS)

The New Mexico Pregnancy Risk Assessment Monitoring System (NM PRAMS) Surveillance Report 2004 – 2005 births found that 20% of New Mexican mothers giving live birth experienced post-partum depression symptoms. Seventeen states conducted PRAMS surveys. New Mexico ranked the highest for maternal depression as compared to Maine that reported the lowest prevalence at 11%. As a result, the FHB is working with the NM Governor's Women's Health Advisory Council (GWHAC) to develop policy on maternal depression. FHB and GWHAC are working together to ensure all women have access to prenatal as well as postpartum mental health services. One gap in services that is being addressed is allowing access to prenatal or postpartum mental health services for women whose care was paid by Medicaid. Over 50% of births in NM are paid for by Medicaid yet benefits end 60 days after birth, just when depression symptoms become apparent.³⁶

Challenges:

- **Public Awareness**

Parents need to be well informed on the importance of the first five years of a child's life so they can support optimal development. Many are unaware and as a result do not seek high quality environments for their infants.

- **Workforce Development**

Despite the fact that these are the most important years for brain development, child care providers receive low pay and often times have little to no professional development. Opportunities for professional development do exist, but many child care providers simply move on to higher paying jobs once they complete the programs.

Because of the labor intensive nature of infant care, the cost is high which means many centers only take older children.

- **Lack of Services**

There continues to be a great need for low-cost, linguistically, culturally and geographically accessible services within the state to under-insured and uninsured families; finding a mental health provider who will take Medicaid is a key challenge as well. It remains difficult to partner mental and behavioral health with primary care services for families and address the need. The lack of accessible substance abuse prevention and treatment programs presents a large gap in services for New Mexican Families.

Family Engagement

Family engagement includes activities that promote family leadership and advocacy, parenting education through classes as well as service coordination to provide basic needs to families in New Mexico. The Early Childhood Action Network (ECAN) has determined that Parent Advocacy is an area lacking in strength in the state. As a result, the ECAN is conducting a study to determine the best way to engage parents throughout the state in leadership and advocacy.

Local Programs Making a Difference

Parents Reaching Out (PRO), a nonprofit that works statewide and is based in Albuquerque, partners with several public and private agencies to engage families in family leadership and parenting skills. PRO works throughout the state delivering direct trainings, but also trains volunteers to work in various communities. They work with school districts in addition to the New Mexico Department of Health, the Public Education Department, Local Education Agencies, NM Parent Teacher Associations, hospitals, universities and family support agencies. In conjunction with the Family Health Bureau (FHB) at the Department of Health, PRO hosts an annual Family Leadership Action Network (FLAN) Conference to empower families to impact policies affecting all children.

Project FLECHA (Family Leadership for Education, Culture and Healthcare Access) was developed in New Mexico in conjunction with the Kellogg Foundation's SPARK initiative (Supporting Partnerships to Assure Ready Kids) to provide families with a basic understanding of their child's learning style and basic child development so they can support learning at home in easy and culturally appropriate ways. The program was founded on the premise that the most important piece of school success was the relationship between family and child.³⁷

The Center for the Education and Study of Diverse Populations (CESDP) was established by the state legislature in 1993 in order to address the unique and diverse educational needs of the state. Their mission is to assist communities in improving education for all learners. CESDP was asked to create a tool kit to be used by schools and communities to strengthen education. The result was the "Working Together: School-Family-Community Partnerships, A Tool Kit for new Mexico School Communities". The curriculum offers New Mexico a research based yet user friendly resource for families and educators.³⁸

Teen Parents

Another issue of great importance in New Mexico is teen parenthood, as there are 34.5 live births for every 1,000 teens ages 15-17, a rate well above the national average of 22.³⁹ Many statewide agencies and groups are involved in initiatives to help reduce teen pregnancy by engaging the youth in the community through service learning projects, the teaching of effective communication skills and sex education. Emphasis in engaging males is a project of the FHB.⁴⁰ Interestingly, despite having the fifth highest rate of teen pregnancy in the nation, New Mexico ranks among the top six states for effective policies, law and availability of clinical services for teens.⁴¹

The NM GRADS (Graduation Reality And Dual-Role Skills) program serves pregnant and parenting teens in public school settings. While it has been shown to be effective, less than 20%

of NM teen mothers report having been involved in such a program⁴². It has enjoyed legislative support for its self-replicating, self-sustaining, nationally validated teen parent model. Funding has made a transition from a 1989 Special Projects appropriation to inclusion in the 2001 budget of the New Mexico Human Services Department with Welfare Reform funds. These funds flow through the Public Education Department. The 2005 legislature included NM GRADS in the Public Education Department's budget as a reoccurring funded program.

NM GRADS works with teen fathers to promote completion of school, economic independence, healthy families and reduction of risk-taking behaviors. In 2007-2008, the program enrolled 866 students in school and 183 dads in support groups. Two hundred eighty one children of GRADS students were served in child care centers. Program participants had a 2.3% repeat pregnancy rate; 2.73% low birth weight; 222 graduated - a 90% graduation rate; 141 former drop-outs were recruited; 387 were employed; and 100% received some form of public assistance.⁴³

School Based Health Centers

School Based Health Centers (SBHC) are a major policy initiative of the Governor. In 2004, he began an initiative to double the number of SBHC in the state. As a result, the DOH has established over 80 SBHC in all but three counties.⁴⁴ The centers provide comprehensive services determined by the need of the community and are delivered by a multi-disciplinary health team. Services range from:

- **medical** (primary care for injuries, well-child checks, immunizations and lab tests, over the counter medications and prescriptions)
- **behavior health** (behavior health awareness and outreach including suicide prevention, alcohol and substance abuse counseling, depression screening, individual and family therapy, crisis intervention and Telehealth services)
- **prevention** (health promotion and risk reduction, HIV/AIDS and STD awareness and education, nutrition, sports and physical activity counseling)⁴⁵

Challenges

- **Time and Transportation**

Many working families may not have the time to attend parenting classes due to their work schedules. They also may lack dependable transportation to get to the venue.

- **Public Awareness**

Parents need to be well informed on the importance of the first five years of a child's life so they can support optimal development. Knowing about their child's development can help manage behaviors in appropriate ways.

Also, teens need to be targeted to participate in programs such as NM GRADS to help promote positive outcomes for their children and complete their education. In addition, providers who work with teen parents need to have coordinated services.

- **Geographic Diversity**

Some agencies are unable to hold on-going classes in the rural areas. Many of the services are within a two hour radius of Albuquerque and Las Cruces, two urban centers of the state.

Out of School Time/Enrichment

Because an important component of Project LAUNCH is community school development, an Out of School Time/Enrichment section has been added to the scan. Over time a model will be developed to strengthen childhood literacy skills through these out of school time programs. The State of New Mexico tracks more than 35 out-of-school-time programs geared to enrichment and support of its communities and neighborhoods. These programs fall into three general categories: Art and Culture; Education and Literacy; and Community/Empowerment.

The Art and Culture category is comprised of 24 programs, primarily art and museum visits, and includes traveling exhibits. All 24 of these programs fall under the purview of the Department of Cultural Affairs.

Eight programs fall into the category of Community/Empowerment. These consist primarily of family activities, and include festivals with hands-on activities that promote community involvement.

The category of Education/Literacy contains eight programs that focus on educational outreach during out of school time and focuses on outreach programs not typically available in schools. Some of these include astronomy and day/summer camps.

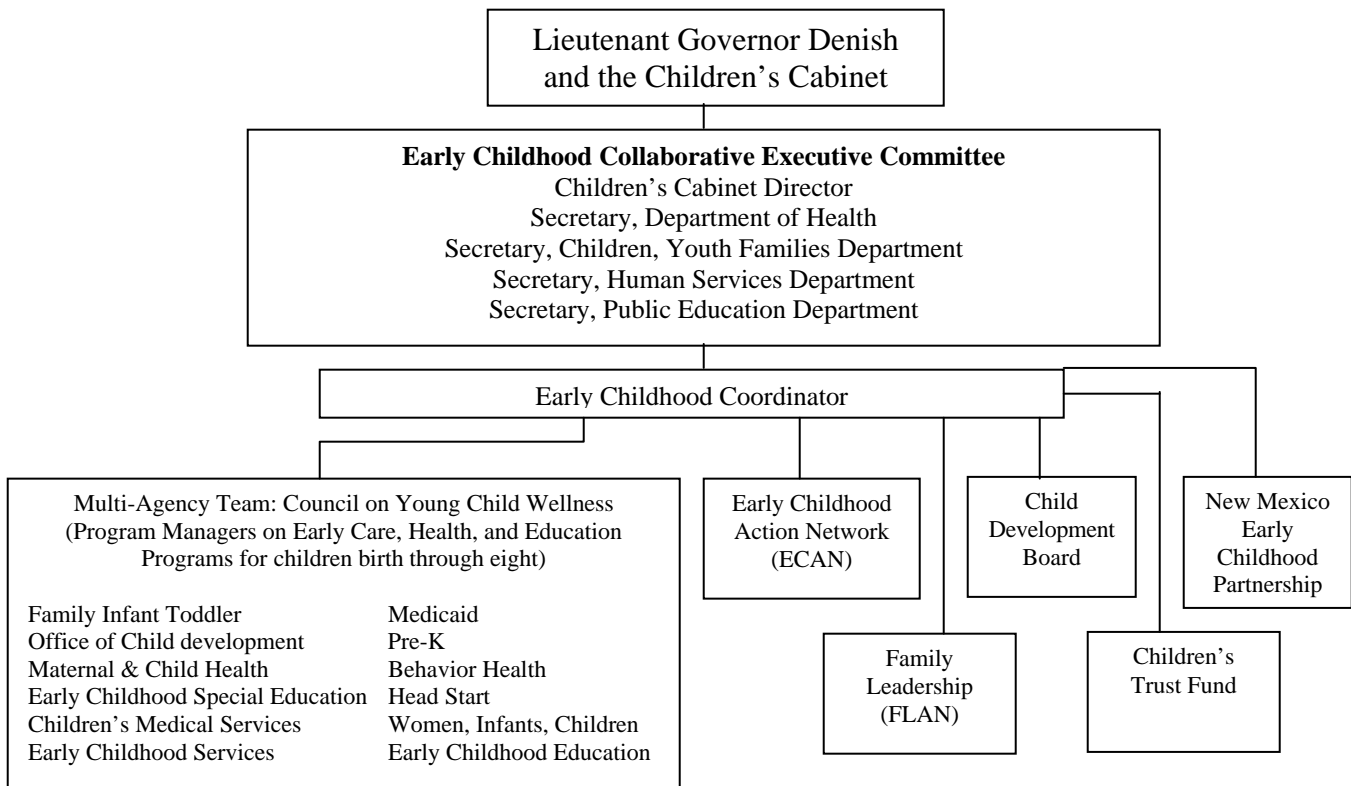
Challenges:

A great need for Out of School Time programming exists in the state. The Afterschool Alliance conducted the *America After 3 PM* study which focused on afterschool care arrangements, need or demand for programming, and satisfaction of existing programming. The study found 19% percent of New Mexican school-aged children are responsible for taking care of themselves and spend an average of eight hours per week unsupervised afterschool. Only 19% of school-aged children participated in afterschool programming but a majority expressed interest if programming was available in their community. In addition, the study found that 89% of parents were extremely or somewhat satisfied with the programs their child attended.

Systems Development: State Level

Interagency Coordination

New Mexico’s early childhood system has evolved in recent years but is now entering a period of major change. A major reorganization of early childhood services overlaps the initiation of Project LAUNCH and of the new ECCS strategic plan, completed as part of the application for funding submitted in February 2009. This reorganization utilizes the existing Children’s Cabinet, which is chaired by Lieutenant Governor Diane Denish, as the oversight body for all major early childhood initiatives. The Children’s Cabinet oversees an Early Childhood Collaborative Executive Committee made up of the Secretaries of the Department of Health, Children Youth and Families Department, Human Services Department, and the Public Education Department. Reporting to this Executive Committee is a new position, as yet unfilled, the Early Childhood Coordinator. This position might be thought of as one thinks of a “czar” for other service areas, such as those already in place in New Mexico, the Behavioral Health Czar, the Drug Czar, and the DWI Czar. While not called a czar and not working out of the Governor’s Office as the current Czar structure does, this position will function similarly, bringing under one umbrella the programs of the four agencies named above that focus on early childhood development. This will also include several groups that currently function at the state to coordinate services and programs, and to increase collaboration: the new Project LAUNCH Council on Young Child Wellness; the Early Childhood Action Network (ECAN) which prepares the state’s ECCS plan; the Family Leadership Action Network; the Child Development Board; the Children’s Trust Fund; and the New Mexico Early Childhood Partnership, which is focused on developing public-private partnerships to fund services and on creating the political will and public support necessary to successfully develop these new funding strategies. This new organizational structure is illustrated below:



The Children's Cabinet, chaired by the Lieutenant Governor, addresses policy, funding and priority issues concerning early childhood. It focuses much of its work on creating new opportunities for child success. It operates with a long range strategic plan, has several committees that bring forward recommendations and develop projects, and, perhaps just as importantly, prepares and publishes the *New Mexico Children's Cabinet Report Card & Budget Report: Growing Our Future, Together* each year as tools to create public awareness of its priorities. Those priorities are, simplified, to create a public emphasis on a small number of indicators to show progress and draw attention to issues that all citizens can understand, and to create a financial picture of how New Mexico invests in early childhood development, health, safety and learning. This and related efforts of the Children's Cabinet are designed to create a high profile public policy agenda around childhood issues.

Several state level groups have existed and will be part of the new structure and are listed above. Those include the new Project LAUNCH Council on Young Child Wellness, the Early Childhood Action Network, the Children's Trust Fund, the Family Leadership Action Network, the Child Development Board; and the New Mexico Early Childhood Partnership. A state structure directed by the Department of Health supports local county Health Councils, which coordinate services and conduct county level planning activities. Many of these Health Councils incorporated pre-existing Maternal and Child Health Councils that were previously funded by the state. A few counties have maintained these county level Maternal and Child Health Councils, which coordinate services at the county level.

New Mexico's Health Policy Commission, and the Women's Health Advisory Council, are both Governor appointed bodies that consider policy issues and make recommendations to the State about key early childhood issues. A number of service projects, policy groups, and workforce initiatives are operated out of the University of New Mexico, primarily the large Albuquerque location. These do not appear to be strongly or uniformly integrated into on-going state dialogues about these issues.

Funding

The Children's Cabinet is developing a plan, within the New Mexico Early Childhood Partnership, to create a public-private partnership that will create new funding streams to support expanded and enhanced early childhood programming that can demonstrate success. This is the major state level initiative to develop long term, sustainable funding sources that can be supported by the state. Business and industry representatives are participating in this initiative.

Federal and state funding for the existing service mix provided by the state principally flows through the four agencies that serve as the Children's Cabinet Executive Committee, noted above. Integrated decision making related to priorities and associated funding will occur there and flow through the various state level groups reporting to the Children's Cabinet.

Private funding at the state level (multi-county) comes from a range of foundations, including: the Los Alamos National Laboratories (LANL) Foundation, and the Con Alma Health Foundation. The New Mexico Community Foundation funds several initiatives at the state level. New Mexico Grantmakers includes other funders who support early childhood initiatives.

Workforce Development

Several workforce development programs exist:

- Early Childhood Mental Health Training Institute, a newly established post-graduate certificate program offering multidisciplinary training to early childhood mental health providers across the state.
- Training and Technical Assistance Programs (TTAPs) offer continuing education from six sites throughout the state for early childhood providers.
- Early Care, Education and Family Support Professional Development System provides credits for licensure or a degree in early childhood education and family support. The Teacher Education and Compensation Helps (T.E.A.C.H.®) scholarship program provides tuition reimbursement for providers seeking a degree and/or licensure.
- Quality Improvement for Pediatricians is provided by Envision New Mexico in collaboration with UNM Developmental Screening Initiative. The goal is to ensure no child reaches kindergarten with an undetected developmental delay by working with communities and doctors to increase the use of standardized developmental screening tools on children birth through age five.

Evidence Based Practices

Project LAUNCH promotes the use of evidence-based programs where feasible; and promotes evaluation in the absence.

- Families FIRST in the FHB/PHD/DOH provides case management to Medicaid eligible pregnant women and their children age zero to three years of age. Most staff are nurses; with some social workers as well. When first developed as a pilot program at UNM, an evaluation by Brandeis University found improvements in selected health indicators, lower infant costs (as compared to Medicaid-paid mothers who were not on Families FIRST). Most services are provided in an office setting, usually co-located with other key services like WIC. The program offers limited home visiting services.
- The First Born® Program was developed in Silver City, NM by a local team that used information from well researched home visiting programs such as the Nurse Family Partnership (NFP) with original research by David Olds. Its protocols and guidelines are unique. Descriptive evaluation studies have been done to look at the proportions of clients with selected outcomes. One proposed strength of this model is that it does not rely on registered nurses. They are included in the team, but the majority of home visiting is done by staff who receive on-the-job training. The program does propose to have similar if not better results on key Maternal Child Health (MCH) indicators as the NFP program.
 - This model was adapted for use in a proposed evaluation study by Santa Fe Institute (SFI) and the Los Alamos National Laboratory (LANL) foundation. An independent evaluation of the First Born® model will a random case control design in Santa Fe County beginning in 2009 it will be done by the Child Policy section of the RAND Corporation. This study will be known as the “Young Parents Study.” LANL and SFI organized an evaluation working group in 2007 that includes key staff from local, state and federal entities.

Training for this model is being provided by the program developers, who initially worked with SAMHSA/CSAP to obtain promising/effective status on the model program development initiative (NREPP) with funding from New Mexico's Office of Substance Abuse Prevention through CSAP's State Incentive Enhancement Grant.

Family and Community Involvement

In April of 2009, ECAN hosted their *Turn the Curve* bi-annual meeting in conjunction with the Kellogg Foundations **Civic and Community Engagement Education Forum: Catalyst for Change in Early Learning and Education**. Over 400 community leaders, practitioners, families, youths, business and government representatives came together to learn about exemplary and innovative programs operating statewide, network efforts and discuss the vision for early learning and education in New Mexico, within a public health framework.

In addition, ECAN's Family Leadership Action Network (FLAN) held their Annual Family Leadership Conference in Albuquerque in April. Over 200 families attended the two day conference to learn more about family engagement. The Department of Health is utilizing the FLAN Leadership Conference to develop strategies to increase parent and family involvement in advocacy and other roles.

Cultural and Linguistic Competence

Many programs developed and/or implemented here in New Mexico such as Project FLECHA, the First Born® Program and the Joining Hands initiative are designed to address cultural and linguistic competence. However, there is still a gap delivering linguistically appropriate services statewide to the diverse cultures of New Mexico. There is an insufficient number of Spanish and native language-speaking professionals in all sectors of the early childhood field from educators and early interventionist to medical staff and mental health workers.

A new statewide cultural competence plan was presented to, and accepted by, the State's Behavioral Health Purchasing Collaborative, the state's Behavioral Health Planning Council, and the Children's Subcommittee of the Council. The Department of Health falls under this umbrella and will adopt this plan to fit its goals over the next year, inclusive of this and other initiatives of the Department. The Plan is now being developed into action plans with detailed steps to implement culturally appropriate practices in all state agencies. It will be utilized at the agency level by all state agencies.

Adoption of Local Practice

The First Born® Program is a home visiting program created in Silver City, NM and is now implemented in four counties in the state. Project FLECHA (Family Leadership for Education, Culture and Healthcare Access) was created through a partnership with the NM Supporting Partnerships to Assure Ready Kids (NM SPARK) initiative. The curriculum has been adapted by Parent's Reaching Out (PRO) and is now used statewide. The Joining Hands framework was also developed in New Mexico and is being used with the SPARK communities to build partnerships between preschools, parents and elementary schools to ensure ready kids and ready schools.

Coordination with other Federally Funded Efforts

This project is thoroughly coordinated with the state's federally funded ECCS project. A dialogue with the Head Start program will be pursued to appropriately coordinate this initiative with the objectives of the Head Start program.

APPENDIX

APPENDIX AProgram Tables

APPENDIX BEndnotes

APPENDIX C Acronyms

APPENDIX A

Early Care and Education					
Service Provided	Agency	Activity	Population Served	Targeted Outcome	2008-2009 Funding
Child Care - Serves children whose families receive benefits and provides them access to quality child care settings that promote physical, mental, emotional, and social development in a safe environment.	Children, Youth and Families Department; Family Services	Early Care & Education	Ages 6 weeks to 13 years Statewide Est. served=22,218	Safe	Federal: 62,656,000 State: 19,057,700 Other: 0 Total: 81,713,700
NM Pre-K - Provide 540 hours of comprehensive Pre-Kindergarten services to increase statewide access to voluntary quality New Mexico Pre-K programs by enrolling new children; providing developmentally appropriate activities; and focusing on school readiness.	Children, Youth and Families Department; Family Services	Early Care & Education	Age 4 Statewide Est. Served=2,372	Educated	Federal: 1,000,000 State: 7,563,000 Other: 0 Total: 8,563,000
Early Childhood Development Centers - Provides high quality, comprehensive early childhood services to children birth to age five. The programs are required to use the Focused Portfolios assessment to document children's developmental milestones as the basis for parent-teacher conferences.	Children, Youth and Families Department; Family Services	Early Care & Education/	Ages 0-5 Statewide Est. Served=395	Healthy	Federal: 0 State: 1,522,400 Other: 0 Total: 1,522,400
Head Start Extended Day - Provides program services for children of TANF participants by extending the Head Start day for children in programs providing service for less than six hours per day or providing a full day program for TANF participants with no other access to child care programs. Also provides comprehensive services to children of TANF families in child care settings that must partner with Head Start to ensure Head Start Performance Standards are met.	Children, Youth and Families Department; Family Services	Early Care & Education	Ages 0-5 Statewide Est. served=249	Educated	Federal: 0 State: 1,947,800 Other: 0 Total: 1,947,800
NM PreK - The purpose is to: (1) increase access to voluntary high-quality PreK programs; (2) focus on enrolling new children and building community capacity; (3) provide developmentally appropriate activities for New Mexico children; (4) focus on school readiness; and (5) expand early childhood community capacity.	Public Education Department; Instructional Support and Vocational Education Division	Early Care & Education	Age 4 only Statewide Est. Served=2,229	Educated	Federal: 0 State: 9,700,000 Other: 0 Total: 9,700,000
Full Day Kindergarten Program - Extends 1/2 day (2.5 hours) kindergarten programs to full day (5.5 hours) to promote literacy readiness for children in public schools. Implementation of full-day kindergarten is optional to districts and a child's participation in full-day kindergarten is optional. As of 2005 all 89 districts offer full-day kindergarten programs in all schools that have a kindergarten level.	Public Education Department; Instructional Support and Vocational Education Division	Early Care & Education	Ages Kindergarten Statewide Est. served=25,761	Educated	Federal: 0 State: 144,394,444 Other: 0 Total: 144,394,444
Special Education for Gifted - Gifted education in New Mexico is administered under most of the rules and regulations of the federal program (IDEA) for students with disabilities. Individualized services are determined for each student and an appropriate advancement of their strengths is administered in the school setting.	Public Education Department; Instructional Support and Vocational Education Division	Early Care & Education	Ages 5-18 Statewide Est. served=14,200	Educated	Federal: 224,239 State: 32,975,538 Other: 0 Total: 33,199,777

Early Care and Education

Service Provided	Agency	Activity	Population Served	Targeted Outcome	2008-2009 Funding
The McKinney-Vento Education for Homeless Children and Youth Program - designed to address problems that homeless children and youth face enrolling, attending, and succeeding in school. Under this program, state educational agencies must ensure each homeless child and youth has equal access to the same free, appropriate public education.	Public Education Department; Instructional Support and Vocational Education Division	Early Care & Education	Ages 5-18 Statewide Est. served=6,000	Educated	Federal: 392,000 State: 0 Other: 0 Total: 392,000
Title I-A - Provides supplementary educational services, usually in reading/language arts and math, to students who are educationally disadvantaged or at risk of failing to meet state standards.	Public Education Department; Rural Education Division	Early Care & Education	Ages 3-18 Statewide Est. served=160,287	Educated	Federal: 107,594,181 State: 0 Other: 0 Total: 107,594,181
William F. Goodling Even Start Family Literacy - Even Start improves the educational opportunities of New Mexico's low-income families by integrating early childhood education, adult literacy and parenting education into a unified family literacy program.	Public Education Department; Rural Education Division	Early Care & Education	Ages 0-7 Statewide Est. served=140	Educated	Federal: 499,258 State: 0 Other: 0 Total: 499,258
Native Language Tribal Certification Program - To teach Native language and culture in public schools and in tribal based language initiatives.	Department of Indian Affairs	Early Care & Education	Ages 0-21 Statewide Est. served=4,660	Educated	Federal: 0 State: 35,000 Other: 0 Total: 35,000
Youth Language Revitalization Program - a take-home keres language lesson plan.	Department of Indian Affairs	Early Care & Education	Ages 0-21 Statewide Est. served=90	Educated	Federal: 0 State: 50,000 Other: 0 Total: 50,000
American Indian-Alaska Native Head Start (ages 3-5) Program promote school readiness by enhancing the social and cognitive development of children through the provision of educational, health, nutritional, social and other services to enrolled children and families. Programs engage parents in their children's learning and help them in making progress toward their own educational, literacy and employment goals. Parents are encouraged to be involved in the administration of local Head Start programs.	Office of Head Start, Administration for Children and Families (ACF), Department of Health and Human Services (DHHS)	Early Care & Education	Ages 3-5 Statewide Est. served=	Educated	Federal: 0 State: 0 Other: 0 Total: 0
Head Start (ages 3-5) Program promote school readiness by enhancing the social and cognitive development of children through the provision of educational, health, nutritional, social and other services to enrolled children and families. Programs engage parents in their children's learning and help them in making progress toward their own educational, literacy and employment goals. Parents are encouraged to be involved in the administration of local Head Start programs.	Office of Head Start, Administration for Children and Families (ACF), Department of Health and Human Services (DHHS)	Early Care & Education	Ages 3-5 Statewide Est. served= 7,279	Educated	Federal: 52,515,381 State: 0 Other: 0 Total: 52,515,381
American Indian-Alaska Native Early Head Start - Federally funded community-based program for low-income families with infants and toddlers and pregnant women that takes into account the unique cultural environments and values of the American Indian-Alaska Native. Its mission is to promote healthy prenatal outcomes for pregnant women, enhance the development of very young children, and promote healthy family functioning.	Office of Head Start, Administration for Children and Families (ACF), Department of Health and Human Services (DHHS)	Early Care & Education	Ages 0-3 Statewide Est. served=	Educated	Federal: 0 State: 0 Other: 0 Total: 0

Early Care and Education

Service Provided	Agency	Activity	Population Served	Targeted Outcome	2008-2009 Funding
Early Head Start - Federally funded community-based program for low-income families with infants and toddlers and pregnant women. Its mission is to promote healthy prenatal outcomes for pregnant women, enhance the development of very young children, and promote healthy family functioning.	Office of Head Start, Administration for Children and Families (ACF), Department of Health and Human Services (DHHS)	Early Care & Education	Ages 0-3 Statewide Est. served=920	Educated	Federal: 0 State: 0 Other: 0 Total: 0
Child Care Scholarships - T.E.A.C.H Early Childhood® New Mexico - Supports professional development through college classes of early childhood teachers/directors working in registered or licensed family child care homes, CYFD-licensed or Native American-recognized early childhood centers. Provides counseling, funding for tuition and books, travel stipends, bonuses upon completion of yearlong contracts. Helps teachers and directors working in the field obtain degrees in early childhood education.	Public Education Department; Early Childhood Division/ Children, Youth and Families Department; Family Services	Early Care & Education/ Systems	Ages 0-5 Statewide Est. served=5,560	Educated	Federal: 0 State: 481,900 Other: 0 Total: 481,900
Teacher Training - Staff conduct training for teachers on a variety of natural history topics.	Department of Cultural Affairs; New Mexico Museum of Natural History and Science	Early Care & Education/ Systems	Ages 4-18 Greater Albuquerque area Est. served=24,400	Educated	Federal: 0 State: 40,000 Other: 0 Total: 40,000
Indian Education Act - Ensure equitable and culturally relevant learning environments and educational opportunities for Native American students enrolled in public schools.	Public Education Department Indian Education Division	Early Care & Education/ Systems	Ages 0-21 Statewide Est. served=5,314	Educated	Federal: 0 State: 2,500,000 Other: 250,000 Total: 2,750,000
NM Alternate Assessment - Available to students with significant cognitive disabilities who meet established criteria for participation. This is the alternate to the following general assessments: NMSBA Grades 3-9, New Mexico High School Standards Based Assessment, Grade 11, New Mexico High School Competency Exam, Grades 10-12.	Public Education Department; Assessment and Accountability Division	Early Care & Education/ Systems	Ages ? Statewide Est. served=2,050	Educated	Federal: 215,986 State: 1,562,942 Other: 180,000 Total: 1,958,928
NM Standards Based Assessment (Grades 3-8 and 11) - This program develops the state mandated student tests, provides guidance to LEAs in the administration of the tests and provides individual and school results of the tests.	Public Education Department; Assessment and Accountability Division	Early Care & Education/ Systems	Grades 3-8, 11 Statewide Est. served=169,990	Educated	Federal: 4,581,141 State: 4,835,743 Other: 0 Total: 9,416,884
Incentives for School Improvement - The fund provides financial incentives to individual schools that made outstanding gains in test scores.	Public Education Department; Assessment and Accountability Division	Early Care & Education/ Systems	Ages 5-18 Statewide Est. served=250,000	Educated	Federal: 0 State: 3,029,620 Other: 0 Total: 3,029,620
Professional Development Fund - The Educator Quality Division, working in collaboration with the NMSU and its Center for Boarder and Indigenous Education Leadership Program, are developing summer leadership academies for educators. Additionally, the CeBIEL program has convened a "Design Team" to reform the current principal evaluation process.	Public Education Department; Educator Quality Division	Early Care & Education/ Systems	Ages ? Statewide Est. served=?	Educated	Federal: 0 State: 2,000,000 Other: 0 Total: 2,000,000

Early Care and Education

Service Provided	Agency	Activity	Population Served	Targeted Outcome	2008-2009 Funding
The Title II, Part A - Provides federal funds to support educator quality issues by way of professional development. The Program also provides support to ensure that teachers teaching in the core content areas meet the Highly Qualified Teacher (HQT) requirement.	Public Education Department; Educator Quality Division	Early Care & Education/ Systems	Ages ? Statewide Est. served= ?	Educated	Federal: 23,044,481 State: 0 Other: 0 Total: 23,044,481
Transition to Teaching - Supports the recruitment and development of new teachers by way of an Alternative Licensure Pathway. Transition to Teaching Program participants are frequently mid-career changers and/or new college graduates.	Public Education Department; Educator Quality Division	Early Care & Education/ Systems	Ages ? Statewide Est. served=328,111	Educated	Federal: 381,531 State: 0 Other: 0 Total: 381,531
General Obligations Bond C - Acquire library books, equipment, and library resources for public and state supported school libraries.	Public Education Department; Instructional Support and Vocational Education Division	Early Care & Education/ Systems	Ages 0-21 Statewide Est. served=333,000	Educated	Federal: 0 State: 3,000,000 Other: 0 Total: 3,000,000
Fine Arts Education - Funds elementary arts education programs for all NM elementary students.	Public Education Department; Instructional Support and Vocational Education Division	Early Care & Education/ Systems	Ages 5-12 Statewide Est. served=158,000	Involved	Federal: 0 State: 29,000,000 Other: 0 Total: 29,000,000
Reading First - A federal initiative for children in grades K-3, focusing on reading, and its Five Essential Components: Phonemic Awareness, Phonics, Fluency, Vocabulary and Comprehension. New Mexico added a Sixth Component - Oral Language Development.	Public Education Department; Instructional Support and Vocational Education Division	Early Care & Education/ Systems	Ages Grades K-3 Statewide Est. served=?	Educated	Federal: Unknown State: Unknown Other: Unknown Total: Unknown
Charter School - To provide state and federal stimulus funds to support charter schools. Disseminate information and provision of technical assistance to parents, community members, schools, and district personnel on issues relevant to start-up and management of charter schools.	Public Education Department; Instructional Support and Vocational Education Division	Early Care & Education/ Systems	Ages 5-18 New charters only Est. served=10,400	Educated	Federal: 4,600,000 State: 753,722 Other: 0 Total: 5,353,722
Kindergarten Three Plus – Program designed to demonstrate how increased kindergarten time narrows the achievement gap and improves cognitive skills for economically disadvantaged students. The full-day kindergarten school year must be extended by at least 15 days and up to two months. HB43 allows for expansion of the project to school districts with high-poverty schools.	Public Education Department; Instructional Support and Vocational Education Division	Early Care & Education/ Systems	Ages 5-8 Statewide Est. served=8,000	Educated	Federal: 0 State: 7,163,400 Other: 0 Total: 7,163,400
The Special Education Bureau - Responsible for general supervision and distribution of federal funding for Individuals with Disabilities Education Act, allocated to all school districts and charter schools in New Mexico. Approximately all of the funds flow to the school district to support special education programs.	Public Education Department; Instructional Support and Vocational Education Division	Early Care & Education/ Systems	Ages 3-21 Statewide Est. served=48,339	Educated	Federal: 78,440,480 State: 0 Other: 0 Total: 78,440,480
State Bilingual Education-Title III Programs - Supports districts and charter schools in implementing bilingual and multicultural education programs to students in grades K-12. Provides support to districts for serving the needs of English Language Learners in grades k-12.	Public Education Department; Instructional Support and Vocational Education Division	Early Care & Education/ Systems	Ages 0-21 Statewide Est. served=65,000	Educated	Federal: 4,685,900 State: 40,697,003 Other: 0 Total: 45,382,903

Early Care and Education

Service Provided	Agency	Activity	Population Served	Targeted Outcome	2008-2009 Funding
Core Curriculum - focuses on a more rigorous curriculum at the K-6 level.	Public Education Department; Instructional Support and Vocational Education Division	Early Care & Education/ Systems	Ages 5-12 Statewide competition Est. served=10,700	Educated	Federal: 0 State: 300,000 Other: 0 Total: 300,000
Summer Reading, Math & Science Institutes - Provides professional development and follow-on support for teachers.	Public Education Department; Instructional Support and Vocational Education Division	Early Care & Education/ Systems	Ages 6-12 Statewide Est. served= ?	Educated	Federal: 1,510,150 State: 2,500,000 Other: 0 Total: 4,010,150
Truancy & Dropout Prevention - This program is a priority initiative of Governor Richardson to provide programs that are targeted at preventing truancy and drop out in New Mexico public schools.	Public Education Department; Instructional Support and Vocational Education Division	Early Care & Education/ Systems	Ages 5-18 Statewide Est. served=?	Educated	Federal: 0 State: 850,000 Other: 0 Total: 850,000
Priority Schools Bureau (3) - Provides technical assistance to Schools In Need Of Improvement with a designation of CA R1, and R2. Provides technical assistance on Statewide Regional Leadership Trainings for all district and school leadership teams, and training for leaders and EPSS Coordinators. Provide district support for S1 and S2 schools.	Public Education Department; Quality Assurance and Systems Integration	Early Care & Education/ Systems	Age ? Statewide Est. served=35,000	Supported	Federal: 4,301,283 State: 5,500,000 Other: 0 Total: 9,801,283
Title V, Part A - Provides supplemental funds for the implementation of innovative Programs at the district or school level. Formerly known as Title VI, this program now includes 27 areas for program activities, ranging from library materials to school nurses.	Public Education Department; Rural Education Division	Early Care & Education/ Systems	Ages 3-18 Statewide Est. served= ?	Educated	Federal: Unknown State: Unknown Other: Unknown Total: Unknown
Comprehensive School Reform - Improves student achievement by supporting the implementation of comprehensive school reforms based on scientifically-based research and effective practices so children, especially those in low-performing, high poverty schools, can meet state content and academic achievement standards.	Public Education Department; Rural Education Division	Early Care & Education/ Systems	Ages ? Statewide Est. served=?	Educated	Federal: Unknown State: Unknown Other: Unknown Total: Unknown
Title I School Improvement - Enables School Improvement schools to implement programs and activities to meet Adequate Yearly Progress. Programs and activities must address academic needs and must be aligned with the schools' EPSS/School Improvement Plans.	Public Education Department; Rural Education Division	Early Care & Education/ Systems	Ages ? Statewide Est. served=36,000	Educated	Federal: 4,298,706 State: 0 Other: 0 Total: 4,298,706
Title V, Part A - Provides supplemental funds for the implementation of innovative Programs at the district or school level. Formerly known as Title VI, this program now includes 27 areas for program activities, ranging from library materials to school nurses.	Public Education Department; Rural Education Division	Early Care & Education/ Systems	Ages 3-18 Statewide Est. served= ?	Educated	Federal: Unknown State: Unknown Other: Unknown Total: Unknown
Title I-D, Neglected and Delinquent - To improve educational services for students in district and state institutions for neglected or delinquent children. Provides with services needed to make a successful transition from institutions to further schooling or employment.	Public Education Department; Rural Education Division	Early Care & Education/ Systems	Ages 5-17 Statewide Est. served=1,059	Educated	Federal: 256,480 State: 0 Other: 0 Total: 256,480

Early Care and Education

Service Provided	Agency	Activity	Population Served	Targeted Outcome	2008-2009 Funding
Title I-C, Migrant - To support state and local programs that meet the special needs of the migratory children of migratory farmworkers (including migratory dairy workers and migratory fishermen).	Public Education Department; Rural Education Division	Early Care & Education/ Systems	Ages 3-21 Statewide Est. served=1,349	Educated	Federal: 852,913 State: 0 Other: 0 Total: 852,913
21st Century Community Learning Centers - provides grants to create community learning centers to assist students in meeting state and local academic achievement standards in core academic subjects by providing students opportunities for academic enrichment and broad array of other activities (during non-school hours or when school is not in session) that reinforce and complement academic programs. Offers families of students opportunities for literacy and educational development.	Public Education Department; Rural Education Division	Early Care & Education/ Systems	Ages 4-18 Schools served by 21st CCLC grants Est. served=19,000	Educated	Federal: 9,347,011 State: 0 Other: 0 Total: 9,347,011
Educational Technology - Provide 21st century learning environments to all NM students, by supporting districts, schools, teachers, and parents with the information, training, support and funding required to incorporate technology within the core practices of education.	Public Education Department; Rural Education Division	Early Care & Education/ Systems	Ages: 5-21 Statewide Est. served=325,500	Educated	Federal: 1,898,340 State: 7,000,000 Other: 0 Total: 8,898,340
Rural Low Income Grant - The purpose of this grant is to provide additional funding to rural, high-poverty districts to assist them in improving instruction and academic achievement.	Public Education Department; Rural Education Division	Early Care & Education/ Systems	Ages: 0-21 Statewide Est. served=59,032	Educated	Federal: 2,032,430 State: 0 Other: 0 Total: 2,032,430
NM Standards Based Assessment (Grades 3-9) - Develops the state mandated student tests, provides guidance to LEAs in the administration of the tests and provides individual and school results of the tests.	Public Education Dept.; Assessment and Accountability Division	Early Care & Education/ Systems	Ages: grades 3-9 Statewide Est. served=?	Educated	Federal: Unknown State: Unknown Other: Unknown Total: Unknown
Teaching and Technical Assistance Program (TTAP) - Offers parents, teachers and caregivers of young children a broad range of services from a toy lending center to parent and provider training and problem solving. The TTAPs are funded through the State of New Mexico's Children, Youth and Families Department. Partners include: San Juan College, Santa Fe Community College, Taos Family Resource Center, Eastern NM Univ., Family Resource and Referral, NM State Univ. La Vida Institute, Western NM Univ., YWCA Cariño.	Children, Youth and Families Department	Early Care & Education/ Systems	Ages: Statewide Est. served=?	Educated	Federal: Unknown State: Unknown Other: Unknown Total: 3,918,325
AIM High Child care rating system - AIM HIGH, a project developed by the Children, Youth and Families Department, teams a child-care program with a program development specialist or mentor to develop a plan for improving the quality of the program. Any home-based, center-based, or school-age program that is licensed or registered is eligible. AIM HIGH also provides on-site technical support and assistance, help with staff development and training, assistance with financial and program planning, financial assistance for program improvements and training, and higher reimbursement rates for children whose childcare is subsidized by the Children, Youth and Families Department.	Children, Youth and Families Department	Early Care & Education/ Systems	Ages: Statewide Est. served=?	Educated	Federal: Unknown State: Unknown Other: Unknown Total:

Early Care and Education

Service Provided	Agency	Activity	Population Served	Targeted Outcome	2008-2009 Funding
New Mexico STARS Quality Rating System - 1 STAR - Basic documentation and health and safety items required to obtain a license; 2 STARS - Focus on a functional environment, positive interactions between caregivers and children, and three handbook elements; 3 STARS - Developmentally appropriate curriculum and lesson planning, assessment of children's progress, rotation of materials, and completion of an Environment Rating Scale; 4 STARS - Results of children's assessment used to create curriculum and lesson planning, lower adult to child ratios and group sizes; 5 STARS - National Accreditation	Children, Youth and Families Department	Early Care & Education/ Systems	Ages: Statewide Est. served=?	Educated	Federal: Unknown State: Unknown Other: Unknown Total:
New Mexico's Child Development Certificate - A state-wide awarded certificate for early childhood teachers. The Certificate is issued by the Office of Child Development under the auspices of the New Mexico Child Development Board. Curriculum has been developed for teachers working with preschool children and assists Head Start and Early Head Start programs to help meet staff qualifications.	Children, Youth and Families Department	Early Care & Education/ Systems	Ages: Statewide Est. served=?	Educated	Federal: Unknown State: Unknown Other: Unknown Total:
Child Care Provider Referrals - The University of New Mexico under the Continuing Education Department provides the New Mexico Kids Child Care Resource and Referral Services. This service is a statewide service designed to improve the availability and quality of child care. This service maintains a list of child care resources and links families who are in need of child care services with child care centers, licensed family child care homes, and other organization based providers.	UNM Continuing Education	Early Care & Education/ Systems	Ages: Statewide Est. served=?	Educated	Federal: Unknown State: Unknown Other: Unknown Total:
New Mexico Childcare Association – Provides support in the advancement and professional development of Child Care and Education Organizations as well as the advancement and improvement of state legislation and regulations, networking and professional development support systems. Members receive training in education, business and other focus areas through regional, state and national training and conferences. Members have access to industry-relevant research and publications. Organizations and individuals can work on their National Early Childhood Program Accreditation (NECPA)	New Mexico Childcare Association	Early Care & Education/ Systems	Ages: Statewide Est. served=?	Educated	Federal: Unknown State: Unknown Other: Unknown Total:
NewMexicoKids Network – Works collaboratively to inform and educate a broad range of consumers that results in high quality early care and education, a respectful and professional environment, is culturally sensitive and is fully accountable. The goals of the NewMexicoKids Network are to maximize existing resources and leverage new ones, increase innovation, bring stakeholders together in pursuit of common goals, and become a powerful new voice for the early childhood profession.	Children, Youth and Families Department	Early Care & Education/ Systems	Ages: Statewide Est. served=	Educated	Federal: Unknown State: Unknown Other: Unknown Total:
Bridging and Expanding Training and Technical Assistance – Supports and strengthens high quality services for young children and their families through the development of partnerships working towards coordinated early childhood training and technical assistance systems that build on strengths, maximize efforts, reduce duplication and capitalize on resources.	Children, Youth and Families Department, University of New Mexico, YWCA of Central New Mexico, NMAEYC	Early Care & Education/ Systems	Ages: Statewide Est. served=	Educated	Federal: Unknown State: Unknown Other: Unknown Total:

Early Care and Education

Service Provided	Agency	Activity	Population Served	Targeted Outcome	2008-2009 Funding
<p>Prior Learning Assessment – Systematic method of finding out what college level skills and knowledge adult students have gained through the years from their work experience. Learning from work experiences is verified and documented to obtain college credit. Credits are awarded for clear demonstration of course competencies.</p>	<p>New Mexico State University</p>	<p>Early Care & Education/ Systems</p>	<p>Ages: Statewide Est. served=</p>	<p>Educated</p>	<p>Federal: Unknown State: Unknown Other: Unknown Total:</p>

Health: Primary					
Service Provided	Agency	Activity	Population Served	Targeted Outcome	2008-2009 Funding
Medical - Provide medical and psychiatric services	Children, Youth and Families Department Juvenile Justice Services	Health: Primary	Ages 0-21 Statewide Est. served=260	Healthy	Federal: 0 State: 2,700,000 Other: 0 Total: 2,700,000
Immunizations - Vaccines for Children - provides all routinely recommended vaccines for children 0-18 in New Mexico through shipments to approximately 475 VFC enrolled healthcare sites across the state. The Program also ensures that protocols, procedures and quality assurance measures are maintained at each site.	Department of Health Public Health	Health: Primary	Ages 0-18 Statewide Est. served=499,800	Healthy	Federal: 33,000,000 State: 3,644,400 Other: 2,500,000 Total: 39,144,400
Newborn Genetic Screening - Identifies children with rare diseases that can cause early death or permanent disability if untreated. Identifying these children at birth can prevent bad outcomes.	Department of Health	Health: Primary	Age Newborn Statewide Est. served=29,000	Healthy	Federal: 0 State: 0 Other: 2,933,260 Total: 2,933,260
Newborn Hearing Screening Program - requires all newborns to be screened for hearing loss before hospital discharge. Children's Medical Services provides follow-up service coordination to ensure newborns at risk for hearing loss receive diagnostic services before 3 months of age, and early intervention services before six month of age to minimize the impact of a hearing loss and promote the development of communication and language.	Department of Health	Health: Primary	Ages 0-5 Statewide Est. served=28,500	Healthy	Federal: 272,303 State: 0 Other: 0 Total: 272,303
Healthier Kids Fund - provides direct services of primary care, dental, eye care, mental health and 3 specialty visits per year. including lab work and x-rays for school-age children, 3-19.	Department of Health; Public Health	Health: Primary	Ages 0-21 Statewide Est. served=1,050	Healthy	Federal: 0 State: 800,000 Other: 0 Total: 800,000
Maternal Child Health - Maternal and Child Health providing medical services and supplies, care and support to pregnant women and children (birth-12) throughout the state of New Mexico.	Department of Health; Public Health	Health: Primary	Ages 0-12 Statewide Est. served=30,430	Healthy	Federal: 335,103 State: 422,797 Other: 6,500 Total: 784,400
New MexiKids - The New Mexico Medicaid program is a no or low-cost health coverage for children under 19 living in families with incomes up to 235% of the federal poverty level. Healthcare for children in families with incomes up to 185% of FPL are provided at no cost. Services for children in families with incomes between 185 -235% of FPL require minimal co-payment. Preventive services do not require a co-payment.	Human Services Department; Medical Assistance	Health: Primary	Ages 0-21 Statewide Est. served=381,202	Healthy	Federal: 849,429,000 State: 299,691,000 Other: 0 Total: 1,149,120,000

Health: Primary					
Service Provided	Agency	Activity	Population Served	Targeted Outcome	2008-2009 Funding
<p>Children and Youth with Special Health Care Needs - provides payment for medical treatment services, supplies and medication and care coordination for families with medically-eligible children and youth. Multidisciplinary pediatric specialty (diagnosis based) outreach clinics provide community-based services to children regardless of income or insurance coverage. Care coordination is provided for all clinic attendees. Provides NMMIP high-risk insurance to eligible children.</p>	Department of Health; Public Health	Health: Primary/ Systems	Ages 0-21 Statewide Est. served=4,500	Healthy	Federal: 2,302,100 State: 5,470,200 Other: 70,000 Total: 7,842,300
<p>Rural Primary Health Care Act - Community-based primary care centers in health care underserved areas of the state are provided partial financial support for operations. Centers provide basic primary medical care services to patients, including preventive and acute care. RPHCA support often supplements federal and local government support of centers. More than 200,000 patients of all ages routinely receive care from these centers.</p>	Department of Health; Public Health	Health: Primary/ Systems	Ages 0-21 Statewide Est. served=108,000	Healthy	Federal: 0 State: 4,659,000 Other: 743,657 Total: 5,402,657
<p>Maternal Child Health - Midwife Licensing and Regulation throughout the state of New Mexico.</p>	Department of Health; Public Health	Health: Primary/ Systems	Ages 0-12 Statewide Est. served=?	Healthy	Federal: 194,771 State: 393,841 Other: Total: 588,612
<p>Baby Net - Information and referral service helps pregnant women and families with small children gain information to access and utilize medical and support services. Includes assessment and early childhood intervention services.</p>		Health: Primary/ Systems	Ages 0-3 Statewide Est. served=?	Healthy	Federal: Unknown State: Unknown Other: Unknown Total: Unknown
<p>Indian Health Services</p>					

Health: Other					
Service Provided	Agency	Activity	Population Served	Targeted Outcome	2008-2009 Funding
Medically Fragile Waiver Program - serves individuals birth to lifespan who are eligible for services based on the determination they have a medically fragile condition and developmental disability or are developmentally delayed or at risk for developmental delay prior to age 22. Provides in-home services to supports a family's decision to care for their family member at home instead of in a hospital or institution.	Department of Health; Department of Health	Health: Other	Ages 0-21 Statewide Est. served=210	Healthy	Federal: 4,850,120 State: 1,992,600 Other: 0 Total: 6,842,720
Commodity Supplemental Food Program - works to improve the health of low-income pregnant and breastfeeding women, postpartum women, infants, children up to age six, and seniors by supplementing their diets with nutritious USDA commodity foods.	Department of Health; Family Services	Health: Other	Ages 0-6 Statewide Est. served=2,963	Healthy	Federal: 1,032,128 State: 0 Other: 0 Total: 1,032,128
Coordinated Approach to Child Health - An evidence-based, coordinated school health program that teaches children to identify, practice and adopt healthy eating and physical activity behaviors.	Department of Health; Family Services	Health: Other	Ages 6-12 Statewide Est. served=11,941	Healthy	Federal: 0 State: 255,000 Other: 0 Total: 255,000
Tobacco Use Prevention and Control - Provide prevention curriculum, leadership training, and tobacco cessation services to underserved youth to prevent tobacco use.	Department of Health; Public Health	Health: Other	Ages 6-18 Statewide Est. served=2,038	Healthy	Federal: 0 State: 0428,0000 Other: 0 Total: 428,000
New Mexico WIC Program - The Women, Infants and Children (WIC) Program is a special supplemental food program that is administered by the United States Department of Agriculture, Food and Nutrition Services (USDA-FNS). The New Mexico WIC Program provides nutrition education and supplemental foods to low-income pregnant/post-partum women, infants and children under the age of five.	Department of Health; Public Health	Health: Other	Ages 0-5 Statewide Est. served=88,632	Healthy	Federal: 61,000,000 State: 1,287,100 Other: 0 Total: 62,287,100
Food and Nutrition Services Bureau - Distribute USDA commodities to schools in New Mexico to help supplement their breakfast and lunch programs. In school year 2007/2008 child care centers went to cash in lieu and no longer receive USDA commodities.	Human Services Department; Income Support	Health: Other	Ages 3-18 Statewide Est. served=202,000	Supported	Federal: 8,133,050 State: 0 Other: 0 Total: 8,133,050
Obesity Prevention - a priority initiative of Governor Richardson to provide programs in public schools that are targeted at increasing physical activity and providing nutrition education.	Public Education Department; Instructional Support and Vocational Education Division	Health: Other	Ages 5-18 Statewide Est. served=20,000	Healthy	Federal: 0 State: 300,000 Other: 0 Total: 300,000
Elementary Breakfast - Serves elementary breakfast to selected elementary school students based on lowest achievement using performance test data. Studies demonstrate that students who eat breakfast are better prepared to excel in all areas of academics.	Public Education Department; Program Support and Student Transportation Division	Health: Other	Ages 5-12 Statewide Est. served=78,057	Healthy	Federal: 14,895,101 State: 3,450,000 Other: 0 Total: 18,345,101

Health: Other					
Service Provided	Agency	Activity	Population Served	Targeted Outcome	2008-2009 Funding
Family Nutrition - Provides reimbursement for feeding children nutritious meals and snacks in day care settings.	Children, Youth and Families Department; Family Services	Health: Other/ Systems	Ages 0-12 Statewide Est. served=41,677	Healthy	Federal: 41,197,900 State: 0 Other: 0 Total: 41,197,900
Office of School Health - responsible for coordinating statewide school health initiatives, including oversight for school nursing programs, school-based health center development and operation, school mental health initiatives, youth suicide prevention and intervention and positive youth development	Department of Health; Public Health	Health: Other/ Systems	Ages 0-24 Statewide Est. served=19,000	Healthy	Federal: 1,872,200 State: 6,101,000 Other: 0 Total: 7,973,200
After School Enrichment - The after school enrichment program is a priority initiative of Governor Richardson to provide programs in schools that are targeted at increasing physical activity, providing nutrition education and enrichment activities.	Public Education Department; Instructional Support and Vocational Education Division	Health: Other/ Systems	Ages 5-18 Statewide Est. served=20,000	Healthy	Federal: 0 State: 1,500,000 Other: 0 Total: 1,500,000
Elementary Physical Education - a priority initiative of Governor Richardson to provide programs in elementary schools that are targeted at increasing physical activity and providing nutrition education through quality physical education courses taught by licensed physical education teachers.	Public Education Department; Instructional Support and Vocational Education Division	Health: Other/ Systems	Ages 5-12 Statewide Est. served=74,326	Healthy	Federal: 0 State: 8,000,000 Other: 0 Total: 8,000,000
Family and Youth Resource Program - provides an intermediary for students and their families at public schools to access social and health care services.	Public Education Department; Instructional Support and Vocational Education Division	Health: Other Systems	Ages 5-18 Statewide Est. served=13,760	Educated	Federal: 0 State: 1,500,000 Other: 0 Total: 1,500,000
Families FIRST - (Families and Infants Receive Services and Training) is a perinatal case management program that coordinates and monitors the medical and social services needed to improve the health status of Medicaid-eligible pregnant women and children from birth to age 3. The program aims to improve prenatal care levels and birth outcomes, such as longer gestational periods and healthy birth weights. Case managers work with clients to enroll them in Medicaid. They assess their medical history, current pregnancy, alcohol, tobacco and other drug use, and their economic, social and familial resources. They create a plan of care and link them to needed services. After delivery, they ensure that the infant is obtaining services, e.g., Early Periodic Screening and Diagnostic Testing (EPSDT), immunizations and screening for early developmental delays.	Department of Health; Public Health	Health: Primary	Ages 0-3 Statewide Est. served=2,115	Healthy	Federal: Unknown State: Unknown Other: Unknown Total: Unknown
Envision New Mexico - Envision New Mexico (ENM) is a healthcare quality improvement (QI) program of the Department of Pediatrics, University of NM Health Sciences Center. The program has been partnering with the NM Departments of Health (DOH) and Human Services (HSD), the New Mexico Pediatric Society, Indian Health Service, New Mexico Alliance on School-based Health Care, New Mexico Salud Managed Care Organizations and other healthcare organizations around	University of New Mexico Health Sciences Center	Health: Other Systems	Ages Statewide Est. served	Healthy	Federal: Unknown State: Unknown Other: Unknown Total: Unknown

Health: Other					
Service Provided	Agency	Activity	Population Served	Targeted Outcome	2008-2009 Funding
the state. Envision currently works with primary care providers in community practices and School-based Health Centers (SBHCs) throughout the state. The QI Initiatives address a number of pediatric healthcare topics and promote provider practice improvement through incorporating best practices, promoting efficient and sustainable systems change/improvement utilizing motivational interviewing techniques; community outreach and resource linkages					
Developmental Screening Initiative – Located at the Center for Development and Disability at Univ. of NM. Promotes earlier detection, referral, and interventional services for young children to address developmental delays in early childhood so that no child enters kindergarten with an undetected developmental delay. Also works with professionals through education, trainings, and on-going support for adoption of quality improvement methods.	University of New Mexico Center for Development and Delay	Health: Other Systems	Ages 0-5 Statewide Est. served=	Healthy	Federal: Unknown State: Unknown Other: Unknown Total: Unknown
NM Voices for Children – NM Voices works to eliminate child poverty and improve the health and well-being of New Mexico's children, families and communities. They work with state and national officials to shape and implement public policies that are supportive of children and working families. They conduct rigorous research and data analysis. They also examine tax and budget policy issues specific to the needs of the poor and train young people and their communities to advocate on the issues that affect them.	NM Voices for Children	Systems	Ages 0-21 Statewide Est. served=	Healthy and Connected	Federal: Unknown State: Unknown Other: Unknown Total: Unknown

Mental Health and Social and Emotional Wellness					
Service Provided	Agency	Activity	Population Served	Targeted Outcome	2008-2009 Funding
Foster Grandparent Program – Through volunteering, individuals 60 years of age+ provide one-on-one daily support in health, education and welfare to children with special or exceptional needs. Also provides volunteer opportunities for limited income persons 60 years of age and older.	Aging and Long Term Services Department; Aging Network Division	Mental Health & Social/Emotional Wellness	Ages 6-12 Statewide Est. served=2,250	Supported	Federal: 1,302,728 State: 1,884,079 Other: 0 Total: 3,186,807
Home Visiting - The Home Visiting Program provides developmental guidance and educational and community resource information to first-time parents. It identifies social supports and refers families to community resources, strengthens the "system of care" for children age birth through three. First-time parent services offered for first three years of child's life, weekly Home visiting services.	Children, Youth and Families Department; Family Services	Mental Health & Social/Emotional Wellness	Ages 0-3 Statewide Est. served=?	Healthy	Federal: 0 State: 1,634,800 Other: 0 Total: 1,634,800
CBH Wrap Around Services - Provides individualized wraparound services for children/adolescents with serious emotional disturbance (SED) or neurobiological (NBD).	Children, Youth and Families Department; Family Services	Mental Health & Social/Emotional Wellness	Ages 5-21 Statewide Est. served=275	Healthy	Federal: 0 State: 1,028,600 Other: 0 Total: 1,028,600
Domestic Violence Services - Program provides an array of residential and non-residential services for adult victims/survivors and child victim/witnesses of domestic violence. Services include shelter care, counseling, crisis intervention, case management life skills, education and training, and treatment for offenders.	Children, Youth and Families Department; Instructional Support and Vocational Education Division	Mental Health & Social/Emotional Wellness	Ages 0-17 Statewide Est. served 3,393	Safe	Federal: 4,505,700 State: 9,208,300 Other: 0 Total: 13,714,000
Permanency Planning - The purpose of permanency planning services is to systematically carry out, within a time-limited period, a set of goal-directed activities designed to help children live with families which can offer continuity of relationships with nurturing parents or caretakers and which offer the opportunity to establish life-long, positive relationships.	Children, Youth and Families Department; Protective Services	Mental Health & Social/Emotional Wellness	Ages 0-17 Statewide; Children in legal custody of state Est. served=4,659	Safe	Federal: 13,477,560 State: 29,054,913 Other: 1,566,300 Total: 44,098,773
In-home Services - Provides voluntary services to children and families who have been the subject of a substantiated report of child maltreatment and are determined to be at moderate or high risk for repeat maltreatment.	Children, Youth and Families Department; Protective Services	Mental Health & Social/Emotional Wellness	Ages 0-17 Statewide Est. served=?	Safe	Federal: 5,011,972 State: 9,360,153 Other: 1,014,000 Total: 15,386,125
CPS Investigation - Assesses safety of allegedly maltreated children, collects and assesses information to determine if incidents of child maltreatment occurred, assesses risk of future maltreatment, determines the need for ongoing protective services.	Children, Youth and Families Department; Protective Services	Mental Health & Social/Emotional Wellness	Ages 0-17 Statewide Est. served=20,706	Safe	Federal: 3,801,609 State: 11,391,843 Other: 0 Total: 15,193,452
Family Infant Toddler Program - provides early intervention services to children in accordance with the Individuals with Disabilities Education Act. Eligible children have or are at risk for a developmental delay or disability in accordance with state law and regulations.	Department of Health; Developmental Disabilities Support Division	Mental Health & Social/Emotional Wellness	Ages 0-3 Statewide Est. served=11,725	Educated	Federal: 23,871,980 State: 13,500,000 Other: 1,300,000 Total: 38,671,980

Mental Health and Social and Emotional Wellness					
Service Provided	Agency	Activity	Population Served	Targeted Outcome	2008-2009 Funding
Behavioral Health Prevention Services - Provision of evidence-based services to children and their families to enhance protective factors, diminish risk factors, improve family function and improve environmental conditions which foster health lifestyles.	Department of Health; Public Health	Mental Health & Social/Emotional Wellness	Ages 0-21 Statewide Est. served=45,857	Healthy	Federal: 3,264,594 State: 2,285,588 Other: 0 Total: 5,550,182
Children's Medical Services (CMS) Family Infant Toddler Program - access point for children who have or are at risk for developmental delay. The CMS program consists of public health social workers who provide service coordination on interim or ongoing basis. Also provides social work services to families with children have complex medical or psychosocial issues.	Department of Health; Public Health	Mental Health & Social/Emotional Wellness	Ages 0-3 Statewide Est. served=200	Healthy	Federal: 0 State: 350,000 Other: 250,000 Total: 600,000
Family Case Advocacy - Provides case advocacy for families of a child with a serious emotional disturbance (SED) or neurobiological (NBD). Emphasis on school advocacy (IDEA and IEP requirements) and provisions of appropriate mental health services.	Children, Youth and Families Department; Family Services	Mental Health & Social/Emotional Wellness/ Systems	Ages 5-18 Statewide Est. served=200	Safe	Federal: 0 State: 307,100 Other: 0 Total: 307,100
Abuse & Neglect Prevention-Children's Trust Fund - The Children's Trust Fund was created to provide the means to develop innovative projects which address: preventing abuse and neglect of children; providing medical, psychological and other appropriate treatment for children who are victims of abuse or neglect; developing community-based services aimed at the prevention and treatment of child abuse and neglect.	Children, Youth and Families Department; Family Services	Mental Health & Social/Emotional Wellness/ Systems	Ages 0-21 Statewide Est. served=2,800	Safe	Federal: 0 State: 392,900 Other: 0 Total: 392,900
CPS Intake - Adhering to a 24 Hr/7 Days-A-Week schedule, CPS Intake receives, screens, prioritizes and assigns reports of alleged child maltreatment by a parent, household member or legal custodian. CPS Intake provides information and referral services and cross-reporting to law enforcement.	Children, Youth and Families Department; Protective Services	Mental Health & Social/Emotional Wellness	Ages 0-17 Statewide Est. served=67,000	Safe	Federal: 829,720 State: 1,779,180 Other: 0 Total: 2,608,900
Citizens Review Board - Reviews cases of children in state custody and makes recommendations to the court. Recommendations are also made to New Mexico Legislature, the Children, Youth and Families Dept., and the courts in regard to policies, statutes, and procedures.	Department of Finance and Administration	Mental Health & Social/Emotional Wellness/ Systems	Ages 0-21 Statewide Est. served=3,200	Safe	Federal: 190,000 State: 410,000 Other: 0 Total: 600,000
Second Step Violence Prevention - Violence prevention curriculum for grades K-3. The curriculum is violence prevention best practices and incorporates literacy.	Department of Health; Division of Epidemiology and Response	Mental Health & Social/Emotional Wellness/ Systems	Ages 0 Santa Fe Public Schools Est. served= ?	Safe	Federal: Unknown State: Unknown Other: Unknown Total: Unknown
Partnership in Character Education - NM was awarded this grant from the United States Department of Education, Safe and Drug Free Schools to support character education in NM schools and communities utilizing CHARACTER COUNTS! as our vehicle.	Public Education Department; Instructional Support and Vocational Education Division	Mental Health & Social/Emotional Wellness/ Systems	Ages ? Statewide Est. served=?	Involved	Federal: Unknown State: Unknown Other: Unknown Total: Unknown

Mental Health and Social and Emotional Wellness					
Service Provided	Agency	Activity	Population Served	Targeted Outcome	2008-2009 Funding
Domestic Violence Curriculum - A priority initiative of Governor Richardson to provide domestic violence curriculum in elementary schools.	Public Education Department; Instructional Support and Vocational Education Division	Mental Health & Social/Emotional Wellness/ Systems	Ages ? Statewide Est. served= ?	Healthy	Federal: Unknown State: Unknown Other: Unknown Total: Unknown
Safe & Drug Free Schools - funds districts to prevent violence in and around schools to prevent the illegal use of alcohol, tobacco, and other illegal drugs and to involve parents and communities to foster a safe and drug free learning environment that promotes student academic achievement	Public Education Department; Instructional Support and Vocational Education Division	Mental Health & Social/Emotional Wellness/ Systems	Ages 5-18 Statewide Est. served=330,000	Educated	Federal: 1,656,153 State: 0 Other: 0 Total: 1,656,153

Family Engagement					
Service Provided	Agency	Activity	Population Served	Targeted Outcome	2008-2009 Funding
Kinship Caregivers Raising Grandchildren - Provision of statewide legal assistance, representation, outreach and education services to establish legal guardianships between kinship caregivers and children who would otherwise enter foster care.	Aging and Long Term Services Department; Consumer and Elder Rights Division	Family Engagement	Ages 0-21 Statewide Est. served=4,000	Supported	Federal: 0 State: 200,000 Other: 0 Total: 200,000
Teen Parent Services - Provides support and assistance to pregnant and parenting adolescent girls and their baby.	Children, Youth and Families Department; Family Services	Family Engagement	Ages 12-21 Statewide Est. served=500	Educated	Federal: 0 State: 603,700 Other: 0 Total: 603,700
Post Adoption Decree Services - The purpose of post adoption decree services is to assist and support families which have adopted eligible children, through the provision of subsidy and other services.	Children, Youth and Families Department; Protective Services	Family Engagement	Ages 0-17 Statewide Est. served=3,660	Supported	Federal: 19,536,819 State: 8,597,972 Other: 0 Total: 28,134,791
P.S. I Love You - Literacy-based intervention program to facilitate positive role modeling for incarcerated parents through the use of children's reading materials. Mothers are assisted in choosing an age-appropriate book to read to their child/children. The mothers practice reading a book, video tape themselves reading the book and mail the book and the tape to their child.	Department of Corrections; Adult Prisons	Family Engagement	Ages 0-21 Women's Correction facilities Grants, Albuquerque Est. served=125	Involved	Federal: 0 State: 1,000 Other: 200 Total: 1,200
Wings Family Events- For LIFE - Providing life skills for inmates and their families through workshops held in the community.	Department of Corrections; Adult Prisons	Family Engagement	Ages 0-21 Statewide Est. served=4,000	Involved	Federal: 0 State: 0 Other: 381,500 Total: 381,500
Fathers as Readers - A literacy-based intervention program designed to facilitate positive role modeling for incarcerated parents through the use of children's reading materials. Fathers are assisted in choosing an age-appropriate book to read to their child/children, then record themselves reading the book and mail the book and tape to their child.	Department of Corrections; Fathers as Readers	Family Engagement	Ages 0-21 Statewide Est. served=300	Involved	Federal: 0 State: 5,000 Other: 2,000 Total: 7,000
Self-Directed Family Support - The program provides a stipend of \$2,600 to eligible families with children or adults with developmental disabilities. Each eligible family leads the decision making process on how to plan the services, supports and budget for their child/ family.	Department of Health; Developmental Disabilities Supports Division	Family Engagement	Ages 0-21 Statewide Est. served=115	Healthy	Federal: 0 State: 279,220 Other: 0 Total: 279,220
Wings Family Events, Children's Backpacks - Family Reunification- Establishes community connections for spouses of inmates and their children with support from local churches	Department of Corrections; Adult Prisons	Family Engagement	Ages 0-21 Statewide Et. Served=700	Involved	Federal: 0 State: 0 Other: 35,000 Total: 35,000
Family Transportation Assistance - Provides gas cards to families of incarcerated females so they may visit	Department of Corrections; Adult Prisons	Family Engagement	Ages 0-18 Women's Corrections Facility-Grants Est. served=120	Involved	Federal: 0 State: 20,000 Other: 0 Total: 20,000

Family Engagement					
Service Provided	Agency	Activity	Population Served	Targeted Outcome	2008-2009 Funding
Overnight Visitation-Mother Child - Enhances family bonds through overnight visits for incarcerated mothers and their children.	Department of Corrections; Adult Prisons	Family Engagement	Ages 0-18 Statewide Est. served=75	Supported	Federal: 0 State: 200,000 Other: 0 Total: 200,000
Developmental Disabilities Waiver - Program provides a wide variety of supports and services to children and youth with disabilities and their families. Ultimate purpose of program is to prevent institutionalization of individuals with a developmental disabilities.	Department of Health; Long Term Care Services	Family Engagement	Ages 0-21 Statewide Est. served=619	Healthy	Federal: 14,414,579 State: 5,910,546 Other: 0 Total: 20,325,125
Maternal Child Health – Several parent education and support programs, including Parents as Teachers, FLAN, ECAN, and prenatal care education.	Department of Health; Public Health	Family Engagement	Ages 0-12 Statewide Est. served=30,430	Healthy	Federal: 289,035 State: 54,533 Other: Total: 343,568
Parents Reaching Out – Enhances positive outcomes for families and children in New Mexico through informed decision-making, advocacy education, and resources. Provides opportunities for families to connect with and support each other. Includes Parent Information/Resources Center, Parent Training and Information Center, DreamCatchers, Family to Family Information Center, Families as Faculty Programs.	Department of Health; Department of Education; Public Education Department; MCH	Family Engagement	Ages Statewide Est. served=20,589	Supported	Federal: 1,519,301 State: Other: Total: 1,519,301
TANF Cash Assistance Program - The program provides cash assistance to families to improve the quality of life for parents and children by increasing family income, assisting parents to develop the discipline necessary for self-sufficiency and to improve their self esteem.	Human Services Department; Income Support	Family Engagement	Ages 0-21 Statewide Est. served=21,500	Supported	Federal: 57,847,400 State: 9,125,000 Other: Total: 66,972,400
NM SAFE KIDS Coalition - is sponsored by DOH in contract with SAFE KIDS Worldwide. The coalition oversees 12 SAFE KIDS organizations statewide for the primary purpose of reducing the incidence of motor vehicle crash fatalities among children 14 and under. The SAFE KIDS organization is primarily for the purpose of purchasing, distributing and installing child and booster car seats via clinics, police departments, and fit recreational helmets for non-motorized vehicle use by all minors.	Department of Health; Division of Epidemiology and Response	Family Engagement	Ages 0-14 Statewide Est. served=25,000	Safe	Federal: 48,249 State: 36,399 Other: 0 Total: 84,648
Child Support Enforcement (Title IV-D of SSA) - Ensures assistance in obtaining support, both financial and medical, to children through locating parents, establishing paternity and support obligations, and monitoring and enforcing obligations. Maximizes child support collections helps reduce public assistance rolls and increases self-sufficiency for families.	Human Services Department; Family Services	Family Engagement	Ages 0-19 Statewide Est. served=80,000	Supported	Federal: 21,052,400 State: 0 Other: 0 Total: 33,970,300
Food Stamp E&T Childcare - HSD transfers federal Food Stamps, Employment and Training (E&T) funds to CYFD to provide benefits to E&T participants. ISD and NMW field staff refers participants to CYFD. CYFD is responsible for direct provision and delivery of childcare payments, and providing information and payment detail.	Human Services Department Income Support	Family Engagement	Ages 0-21 Statewide Est. served=2,913	Supported	Federal: 601,000 State: 601,000 Other: 0 Total: 1,202,000

Family Engagement					
Service Provided	Agency	Activity	Population Served	Targeted Outcome	2008-2009 Funding
TANF Child Care - HSD transfers federal TANF funds to CYFD to provide childcare benefits to TANF participants. ISD field staff and NMW staff refer participants to CYFD. CYFD is responsible for direct provision, delivery of childcare payments, and providing information and payment details.	Human Services Department Income Support	Family Engagement	Ages 0-21 Statewide Est. served=9,938	Supported	Federal: 39,619,000 State: 0 Other: 0 Total: 39,619,000
UNM Family Development Center – Strengthens early childhood education through strong partnerships between families and teachers so that children thrive. Professional development for teachers, parents, childcare providers. Programs include WeMagination (promotes play); Teen Parenting Initiatives, statewide conferences, Handmade Hugs (provides support to new, at-risk moms, including teens.)	University New Mexico	Family Engagement	Ages: teachers, staff, parents and other family members Statewide Est. served=1,385	Educated	Federal: Unknown State: Unknown Other: Unknown Total: Unknown
Parents As Teachers (PAT)/ Families and Children Education (FACE) – Free parent education and family support by certified family educators offered to families throughout pregnancy until their child enters preschool, usually at age 3. Information on early brain development is given. By understanding what to expect during each stage of development, parents can easily capture the teachable moments in every day life to enhance their child's language development, intellectual growth, social development and motor skills. Families receive: home visits, weekly play groups, screenings and serves as a resource network. There are 32 affiliated programs in NM; 17 of these are FACE programs.	Parents As Teachers	Family Engagement	Ages 0-3 Statewide Est. served=1,491	Educated	Federal: Unknown State: Unknown Other: Unknown Total: Unknown
National Indian Parent Information Center – Federally funded program that assists Indian Parents who have children/young adults with special needs by educating, supporting and empowering families to effectively participate in the development of their child's educational goals and create partnerships that meet the needs of the children. www.nipic.org	US Department of Education	Family Engagement	Ages 0-21 Statewide Est. served=over 2,000	Educated	Federal: Unknown State: 0 Other: Unknown Total: Unknown
Education for Parents of Indian Children with Special Needs (EPICS) - Parent training and resource center for American Indian families who live in New Mexico and who have children with disabilities and special needs.	EPICS Project (non-profit)	Family Engagement	Ages 0-21 Statewide Est. served=?	Educated	Federal: Unknown State: 0 Other: Unknown Total: Unknown
Parents of Behaviorally Different Children - Created by families of children and adolescents with neurobiological, emotional and behavioral differences. The organization provides individual advocacy, educational materials, and trainings and seminars for families, mental health professionals and the community at large. PBDC Family Advocates support families by advocating for them in the educational, service-delivery and juvenile justice systems.	Parents of Behaviorally Different Children	Family Engagement	Ages 0-21 Statewide Est. served=?	Supported / Educated	Federal: Unknown State: 0 Other: Unknown Total: Unknown
Center for the Education and Study of Diverse Populations – The Center for the Education and Study of Diverse Populations (CESDP) provides a wide range of services aimed at improving the quality of education for all learners. Comprehensive technical assistance services and products focus on meeting the needs of culturally and linguistically diverse learners through partnerships with the Public Education Department, districts, schools, and communities.	New Mexico Highlands University	Family Engagement	Ages Statewide Est. served=	Educated	Federal: Unknown State: 0 Other: Unknown Total: Unknown

Family Engagement

Service Provided	Agency	Activity	Population Served	Targeted Outcome	2008-2009 Funding
<p>Midwest New Mexico Community Action Programs (Cap) - Cap offices offer a variety of services for seniors, children, the disabled and the low-income client such as food boxes, Commodities, Good Neighbor Fund (utility assistance), "CAPS SNACKS" a program for Child and Adult care food program to reimburse day care providers for food served to their children in care. The idea is to give clients a "Hand Up" in their situation, not a handout.</p>	MWNMCAP	Systems	<p>Ages 5 counties: Valencia County Socorro County Mckinley County Cibola County Catron County</p>	Healthy and Connected	<p>Federal: Unknown State: Unknown Other: Unknown Total: Unknown</p>
<p>ENLACE (Engaging Latino Communities for Education) - This multiyear initiative aims to strengthen the K-20 educational pipeline and increase opportunities for Latino/as to enter and complete college. ENLACE aims to serve as a catalyst to strengthen partnerships and create coalitions among Hispanic-serving institutions (colleges and universities with 25 percent or more Hispanic enrollment), K-12 school districts, communities, businesses, families, and other funders working to increase opportunities for Latinos to enter and complete college. ENLACE in NM was initially funded by the WK Kellogg Foundation and is now funded by the NM State Legislature.</p>		Family Engagement	<p>Ages Statewide Est. served=</p>	Educated	<p>Federal: Unknown State: Unknown Other: Unknown Total: Unknown</p>

Out of School Time/Enrichment					
Service Provided	Agency	Activity	Population Served	Targeted Outcome	2008-2009 Funding
Ames After School Program - Children in pre-K to 6th grade are invited to attend after school program to be introduced to various cultures around the world.	Department of Cultural Affairs; Museum of International Folk Art	Out of School Time/Enrichment/Art/Culture	Ages 4-13 Santa Fe Est. served=4,749	Involved	Federal: 0 State: 0 Other: 35,000 Total: 35,000
Arts Alive, Folk Art to Go, Dia de los Muertos - Three programs with different hands-on activities offered on Milner Plaza, at neighboring community museum and in classrooms.	Department of Cultural Affairs; Museum of International Folk Art	Out of School Time/Enrichment/Art/Culture	Ages 4-21 Santa Fe Est. served=5,494	Involved	Federal: 0 State: 0 Other: 128,000 Total: 128,000
Artworks Program - Teaching artists use museum exhibitions as teaching tools for the city Artworks program.	Department of Cultural Affairs; Museum of Fine Arts	Out of School Time/Enrichment/Art/Culture	Ages 6-12 Santa Fe Est. served=500	Educated	Federal: 0 State: 0 Other: 400 Total: 400
Bilingual Program - Fifth grade students learn to tour first graders through the museum.	Department of Cultural Affairs; Museum of Fine Arts	Out of School Time/Enrichment/Art/Culture	Ages 0-5 Santa Fe Est. served=200	Involved	Federal: 0 State: 0 Other: 200 Total: 200
Boys and Girls Club Art Program - Staff provide multi-visits to art club and annual exhibition of their art work at the MFA.	Department of Cultural Affairs; Museum of Fine Arts	Out of School Time/Enrichment/Art/Culture	Ages 6-12 Santa Fe Est. served=400	Involved	Federal: 0 State: 0 Other: 100 Total: 100
Camp-In Program - Sleepover program where students stay at the museum, explore the exhibits and build rockets to launch.	Department of Cultural Affairs; New Mexico Museum of Space History	Out of School Time/Enrichment/Art/Culture	Ages 5-14 Statewide Est. served=1,031	Educated	Federal: 0 State: 0 Other: 28,000 Total: 28,000
Community Schools - Staff provide multi-visits to neighborhood schools	Department of Cultural Affairs; Museum of Fine Arts	Out of School Time/Enrichment/Art/Culture	Ages 6-12 Santa Fe Est. served=200	Involved	Federal: 0 State: 2,000 Other: 0 Total: 2,000
Dia de los Ninos - Sponsors onsite museum events for families focused on literacy and well-being of children in conjunction with CYFD. There is also a statewide art and story competition.	Department of Cultural Affairs; National Hispanic Cultural Center	Out of School Time/Enrichment/Art/Culture	Ages 0-21 Albuquerque Est. served=3,800	Educated	Federal: 0 State: 10,000 Other: 0 Total: 10,000
Hands On Programs - related to museum exhibitions serving K - 12 grade students and their families.	Department of Cultural Affairs; Museum of International Folk Art	Out of School Time/Enrichment/Art/Culture	Ages 0-21 Statewide Est. served=2,000	Educated	Federal: 0 State: 5,000 Other: 0 Total: 5,000

Out of School Time/Enrichment					
Service Provided	Agency	Activity	Population Served	Targeted Outcome	2008-2009 Funding
Library Lasting Impressions - Partnership with Palace of the Governors to take Lasting Impressions exhibit and activities into new venues. Traveling picture book show, bookmobile expenses, posters and talking books are included.	Department of Cultural Affairs; NM State Library	Out of School Time/Enrichment/ Art/Culture	Ages 6-16 Statewide Est. served=?	Educated	Federal: Unknown State: Unknown Other: Unknown Total: Unknown
MIAC Outreach Program - The focus of outreach is to provide Native American schools and communities with educational programming and resources. Staff visit local communities to teach children through hands-on activities such as weaving.	Department of Cultural Affairs; Museum of Indian Arts and Culture	Out of School Time/Enrichment/ Art/Culture	Ages 6-18 Santa Fe Est. served=1,745	Educated	Federal: 0 State: 3,500 Other: 0 Total: 3,500
New Mexico Arts Division funds up to 26 New Mexico organizations whose primary focus is children and the arts, and approximately 69 organizations statewide with children's programming components. Each grant request funded has been shown to leverage 23 dollars for each dollar spent.	Department of Cultural Affairs; NM Arts	Out of School Time/Enrichment/ Art/Culture/ Systems	Ages 6-18 Statewide Est. served=400,000	Supported	Federal: 500,000 State: 900,000 Other: 0 Total: 1,400,000
Palace School Groups - Personalized tours given by Palace museum educator with interactive experience built-in. Interpretive dialogue depending on subject studied and hands-on activity.	Department of Cultural Affairs; New Mexico History Museum/Palace of the Governors	Out of School Time/Enrichment/ Art/Culture	Ages 7-17 Santa Fe Est. served=5,000	Educated	Federal: 0 State: 6,400 Other: 0 Total: 6,400
Lasting Impressions - Multi-year, multi-faceted program with exhibition, traveling exhibition, publications, website and staff-run educational outreach efforts.	Department of Cultural Affairs; New Mexico History Museum/Palace of the Governors	Out of School Time/Enrichment/ Art/Culture	Ages 4-18 Statewide Est. served=?	Educated	Federal: Unknown State: Unknown Other: Unknown Total: Unknown
School Days - School Projects - Transportation is provided to the Cultural Center and to schools for art, cultural and history projects.	Department of Cultural Affairs; National Hispanic Cultural Center	Out of School Time/Enrichment/ Art/Culture	Ages 6-12 Albuquerque Est. served=13,000	Educated	Federal: 0 State: 12,000 Other: 10,000 Total: 22,000
Tours with Hands-on Activities - A visit to the museum that is an excellent introduction to the complexity and diversity of the Native American cultures of the region. Staff delivers lessons in mapmaking, claywork and weaving activities in the museum classroom as well as four different theme-based guided tours of the museum.	Department of Cultural Affairs; Museum of Indian Arts and Culture	Out of School Time/Enrichment/ Art/Culture	Ages 6-12 Santa Fe Est. served=1,036	Educated	Federal: 0 State: 4,000 Other: 0 Total: 4,000
Van of Enchantment - a mobile museum (filled with exhibits and hands-on artifacts) that travels to rural communities bringing DCA's cultural resources to citizens of New Mexico.	Department of Cultural Affairs; Museum Services	Out of School Time/Enrichment/ Art/Culture	Ages 4-8 Statewide Est. served=2,208	Educated	Federal: 0 State: 10,000 Other: 20,000 Total: 30,000
Arts Alive on Milner Plaza - This program provides a free series of outdoor hands-on activities for families and children. They include a wide variety of disciplines on two afternoons a week for eight weeks in July and August.	Department of Cultural Affairs; Museum of International Folk Art	Out of School Time/Enrichment/ Community/ Empowerment	Ages 4-18 Santa Fe Est. served=525	Educated	Federal: 0 State: 4,000 Other: 1,000 Total: 5,000

Out of School Time/Enrichment					
Service Provided	Agency	Activity	Population Served	Targeted Outcome	2008-2009 Funding
El Camino Real Auto Tour - Auto tour for family travel along El Camino Real includes two audio CDs and booklet describing past and present history and music of the Royal Road. Workshops are available through El Camino Real International Heritage Center.	Department of Cultural Affairs; Office of Cultural Affairs	Out of School Time/Enrichment/Community/Empowerment	Ages 6-12 Statewide Est. served=200	Safe	Federal: Unknown State: Unknown Other: Unknown Total: Unknown
Isleta Recreation Program - Provides programs to the pueblo, to meet community needs and promote community involvement in recreation, culture activities, education, health, family life activities in well maintained accessible and safe facilities.	Department of Indian Affairs	Out of School Time/Enrichment/Community/Empowerment	Ages 0-21 Isleta Pueblo Est. served=125	Healthy	Federal: 0 State: 50,000 Other: 0 Total: 50,000
Sun Mountain - Festival features hands-on activities including traditional games, spear throwing, and pottery and jewelry making. Demonstrations during a two-day event where children may learn about and participate in various aspects of historical and contemporary Native Southwestern traditions.	Department of Cultural Affairs; Museum of Indian Arts and Culture	Out of School Time/Enrichment/Community/Empowerment	Ages 5-17 Santa Fe Est. served=1,176	Involved	Federal: 0 State: 0 Other: 5,000 Total: 5,000
Sun Mountain Gathering - This festival features entertainment and hands-on activities including traditional games, spear throwing and pottery and jewelry-making. Demonstrations of ancient technologies include arrow-making, flint knapping, weaving and dyeing, pottery firing and cooking with hot rocks.	Department of Cultural Affairs; Museum of Indian Arts and Culture	Out of School Time/Enrichment/Community/Empowerment	Ages 0-21 Santa Fe Est. served=?	Educated	Federal: Unknown State: Unknown Other: Unknown Total: Unknown
Monument Children's Programs - There are six State Monuments throughout New Mexico that produce at least 51 annual programs for children (Fort Sumner has 13 and its Bosque Redondo Memorial has 2, Coronado has 10, El Camino Real International Heritage Center has 5, Fort Selden has 7, Jemez has 4 and Lincoln has 10.)	Department of Cultural Affairs; New Mexico State Monuments (six sites)	Out of School Time/Enrichment/Community/Empowerment	Ages 6-18 Statewide Est. served=3,000	Safe	Federal: 0 State: 60,000 Other: 10,000 Total: 70,000
National Hispanic Cultural Center Family Days - General public is invited to bring their families to the Center for themed activities.	Department of Cultural Affairs; National Hispanic Cultural Center	Out of School Time/Enrichment/Community/Empowerment	Ages 0-21 Albuquerque Est. served=5,000	Involved	Federal: 0 State: 1,750 Other: 1,800 Total: 3,500
New Mexico Museum of Natural History and Science Family Days - Programs are scheduled throughout the year about a specific exhibition or a DynaMax film-related theme for children and their families.	Department of Cultural Affairs; New Mexico Museum of Natural History and Science	Out of School Time/Enrichment/Community/Empowerment	Ages 4-18 Albuquerque Est. served=5,000	Educated	Federal: 0 State: 5,000 Other: 5,000 Total: 10,000
Winterfeast - A special community holiday celebration featuring Native American foods drawn from different regions of the Southwest. This program promotes sustainable living and healthier eating with many hands-on activities.	Department of Cultural Affairs; Museum of Indian Arts and Culture	Out of School Time/Enrichment/Community/Empowerment	Ages 4-18 Santa Fe Est. served=325	Educated	Federal: 0 State: 5,000 Other: 3,500 Total: 8,500
Archaeology Outreach - The OAS has multiple educational outreach programs that range from science and math, the Keres intensive language program, to sending archaeologists to classrooms and on Van of Enchantment trips. The office reaches all 33 counties within a 3 year period. and recently won international recognition for its educational outreach efforts.	Department of Cultural Affairs; Office of Archaeological Studies	Out of School Time/Enrichment/Education/Literacy	Ages 6-18 Statewide Est. served=2,010	Educated	Federal: 0 State: 30,000 Other: 6,000 Total: 36,000

Out of School Time/Enrichment					
Service Provided	Agency	Activity	Population Served	Targeted Outcome	2008-2009 Funding
Bridging to the Arts - Summer arts and literacy program using museums and local community resources in 18 school districts to serve TANF recipients and train teachers and parents. Final community celebrations involved opera, circus, plays, art shows and festivals.	Department of Cultural Affairs; Office of Cultural Affairs	Out of School Time/Enrichment/ Education/Literacy	Ages 0-5 Statewide Est. served=?	Involved	Federal: Unknown State: Unknown Other: Unknown Total: Unknown
Discovery Center - The Discovery Center is a hands-on classroom run by staff that provides children with opportunities for exploration and creative investigation.	Department of Cultural Affairs; Museum of Indian Arts and Culture	Out of School Time/Enrichment/ Education/Literacy	Ages 4-18 Santa Fe Est. served=2,500	Educated	Federal: State: 0 Other: 3,500 Total: 3,500
Naturalist Center - Hands-on Discovery Room with live animals and natural history specimens introduces children from the city to environmental wonders.	Department of Cultural Affairs; New Mexico Museum of Natural History and Science	Out of School Time/Enrichment/ Education/Literacy	Ages 4-18 Albuquerque Est. served=50,000	Educated	Federal: 0 State: 60,000 Other: 0 Total: 60,000
Shuttle Camp - offers 11 different week-long summer sessions over a 9 week period for children from all over the world. Each program is grade specific and has a foundation of activity-based learning. Sessions are offered both as day-camp and residential programs.	Department of Cultural Affairs; New Mexico Museum of Space History	Out of School Time/Enrichment/ Education/Literacy	Ages 4-18 Alamogordo Est. served=593	Educated	Federal: 0 State: 0 Other: 90,000 Total: 90,000
Starlab - A portable planetarium that travels to schools to introduce astronomy to students in an exciting, new way.	Department of Cultural Affairs; New Mexico Museum of Space History	Out of School Time/Enrichment/ Education/Literacy	Ages Statewide Est. served=	Educated	Federal: Unknown State: Unknown Other: Unknown Total: Unknown
Young Explorers - Natural History Summer Camp for pre-school to middle school students.	Department of Cultural Affairs; New Mexico Museum of Natural History and Science	Out of School Time/Enrichment/ Education/Literacy	Ages 4-12 Statewide Est. served=250	Involved	Federal: 0 State: 20,000 Other: 30,000 Total: 50,000
State Library Youth Services - Summer Reading program with 1800 different programs, school visits and other services provided.	Department of Cultural Affairs; NM State Library	Out of School Time/Enrichment/ Education/Literacy	Ages 6-16 Statewide Est. served=40,400	Educated	Federal: 5,000 State: 30,000 Other: 0 Total: 35,000
Statewide Classroom - Museum staff visit classrooms around the state as requested.	Department of Cultural Affairs	Out of School Time/Enrichment/ Education/Literacy	Ages 6-12 Statewide Est. served=1,000	Educated	Federal: 0 State: 0 Other: 500 Total: 500
NM Out of School Time Network - A project of the New Mexico Forum for Youth in Community (the Forum) focused on building a diverse statewide afterschool network and resources needed for such programming, assessing breadth and depth of OST programming in NM, influencing state policy and legislation, and identify OST indicators of well-being for NM children. Funded by the Mott Foundation.	New Mexico Forum for Youth in Community	Out of School Time/Systems	Ages: School-aged Statewide Est. served=	Educated	Federal: 0 State: 0 Other: Total:

This page intentionally left blank.

APPENDIX B

Endnotes

- ¹ New Mexico Selected Health Statistics Annual Report 2006, pg. 28
- ² NM Vital Records and Health Statistics, Annual Report 2006, Figure 1.16, page 23; original source the US Census Bureau Housing & Household Economic Statistics division, small area estimates.
- ³ Children's Cabinet 09 report, pg. 9
- ⁴ Children's Cabinet 09 report, full text at www.nmchildrenscabinet.com
- ⁵ Turn the Curve Conference, April 27-28, Albuquerque, NM
- ⁶ 2008 Kids Count Data Book, pg. 79
- ⁷ Albuquerque Sunday Journal, March 29, 2009
- ⁸ Children's Cabinet 09 report, pg. 5
- ⁹ Children's Cabinet 09 report, pg. 19
- ¹⁰ NIEER report, <http://nieer.org/mediacenter/index.php?PressID=82>
- ¹¹ Interview with Karen Ziegler, PreK Program Manager, CYFD 02/19/09
- ¹² Children's Cabinet 09 report, pg. 15
- ¹³ <http://www.newmexicokids.org/#.pages.childcare.CenterProvider.viewcenters.cfm%3Ffid%3D27>
- ¹⁴ NewMexicoKids Network 2007-2008 Annual Report, pg. 5
- ¹⁵ Children's Cabinet 09 report, pg. 14
- ¹⁶ Children's Cabinet 09 report, pg. 18
- ¹⁷ <http://www.nmcf.org>
- ¹⁸ Interview with Emily Darnell Nunez, NM Community Foundation 04/24/09
- ¹⁹ NM SPARK Strategies for School Success Report, January 2007, pg. 3
- ²⁰ Interview with Baji Rankin, NMAEYC Executive Director, 03/20/09
- ²¹ Children's Cabinet 09 report, pg. 13
- ²² http://www.raconline.org/info_guides/frontier/frontierfaq.php
- ²³ Voices of the Health Care Crisis from Rural New Mexico report
- ²⁴ Interview with Roberta Moore, DOH FHB 03/24/09
- ²⁵ Interview with Harvey Licht, Primary and Rural Health Division, Director (DOH) 03/10/09
- ²⁶ <http://www.ihs.gov/FacilitiesServices/areaOffices/albuquerque/>
- ²⁷ http://www.ihs.gov/FacilitiesServices/areaOffices/albuquerque/index.cfm?module=abq_zuni_ramah_su
- ²⁸ Interview with Carol Tyrell and Roberta Moore, DOH FHB, 03/24/09
- ²⁹ New Mexico Selected Health Statistics Annual Report 2006, pg. 53.
- ³⁰ Interview with Carol Tyrell and Roberta Moore, DOH FHB, 03/24/09
- ³¹ Interview with Andy Gomm, FIT Program Manager, 03/19/09
- ³² Interview with Sherri Alderman, UNM DSI Project Director 04/14/09
- ³³ Interview with Roberta Moore, DOH FHB, 03/24/09
- ³⁴ Building a System of Home Visiting in New Mexico, May 2008, pg. 3-4
- ³⁵ New Mexico Protective Services Fact Book, Quarter 4/Annual - Calendar Year 2007, pg. 11
- ³⁶ NM PRAMS Surveillance Report 2004 – 2005 births, pg. 4
- ³⁷ Interview with Louise Kahn, UNM Salud, 03/19/09
- ³⁸ www.cesdp.nmhu.edu
- ³⁹ Children's Cabinet 09 report, pg. 9
- ⁴⁰ Interview with Carol Tyrell, DOH FHB, 03/24/09
- ⁴¹ Children's Cabinet 09 report, pg. 9
- ⁴² NM PRAMS Surveillance Report 2004 – 2005 births
- ⁴³ <http://www.nmgrads.org/>
- ⁴⁴ www.nmassembly.org
- ⁴⁵ www.nmassemble.org

APPENDIX C

Acronym List

CESDP	Center for the Education and Study of Diverse Populations
CMS	Children’s Medical Services
CNM	Certified Nurse Midwife
CYFD	Children, Youth and Families Department
DOH	Department of Health
DOH FHB	Dept. of Health Family Health Bureau
DSI	Developmental Screening Initiative
ECCS	Early Childhood Comprehensive Systems
Families FIRST	Families and Infants Receive Services and Training
FPL	Federal Poverty Level
HSD	Human Service Department
LANL	Los Alamos National Laboratory
LMW	Licensed Midwife
MAT CYCW	Multi-Agency Team: Council for Young Child Wellness
MCH	Maternal Child Health
NFP	Nurse Family Partnership
NM GRADS	Graduation Reality And Dual-Role Skills
NM PRAMS	The New Mexico Pregnancy Risk Assessment Monitoring System
NM PreK	New Mexico Pre Kindergarten
NM SPARK	Supporting Partnerships to Assure Ready Kids
NM T.E.A.C.H.®	Teacher Education and Compensation Helps®
NMCF	New Mexico Community Foundation
PAK	Premium Assistance for Kids
PRO	Parents Reaching Out
Project FLECHA	Project Family Leadership for Education Culture and Healthcare Access
S-CHIP	State Child Health Insurance Program
SFI	Santa Fe Institute
TANF	Temporary Assistance for Needy Families
TTAPs	Training and Technical Assistance Programs
UNM FDP	University of New Mexico’s Family Development Program
WIC	Women Infant and Children